



International Journal of
**Young Scientist
Research**

Vol 8, No 1, Sep. 2024

ISSN: 2588- 5111

A swirling vortex of colorful fluids

Contents

Freezing Droplet..... (4-7)

Candle Light Trick..... (8-11)

Static Speaker.....(12-14)

Magnetic Hills..... (15-17)

Candle Lighting Trick..... (18-19)

Light Rings..... (20-22)

Trajectory of a rolling object..... (23-25)

Acoustic Lens(26-30)

. Natural Timing Devices as.....(31-33)

Cooling Jug (34-35)

Siren(36-40)

Editor in Chief

Dr. Dina Izadi
Physics Education, National Polytechnic Institute
IPN, Mexico
Researcher & President, AYIMI & ADIB
info@ayimi.org
dinaocean@gmail.com

Associated Editors

Professor Masoud Torabi Azad
Physical Oceanography,
Azad University &
Board Member, AYIMI
torabi_us@yahoo.com

Nona Izadipannah
Geophysicist, Scientific Committee &
Board Member, AYIMI
daisyip67@gmail.com

Professor Cesar Eduardo Mora Ley
Physics Education, National
Polytechnic Institute, IPN, and
CICATA Principal, Mexico
ceml36@gmail.com

Dorna Izadipannah
Microbiologist, Medical Diagnosis Laboratory
Scientific Committee &
Board Member, AYIMI
dorna_izadipannah@yahoo.com

Dr. Carmen del Pilar Suarez Rodriguez
Faculty Member, Physics Education,
UASLP, Universidad Autónoma
de San Luis Potosí, Mexico
pilar.suarez@uaslp.mx

Young Scientist Research

Title proper: Young Scientist Research

Subject: NATURAL SCIENCES, ART,
ENGINEERING AND TECHNOLOGY

Corporate contributor: Ariaian Young
Innovative Minds Institute

Publisher: Tehran: Ariaian Young
Innovative Minds Institute

Dates of publication: 2017- Present

Frequency: Annual

Type of resource: Periodical

Language: English

Country: Iran

Medium: Online

Indexed by: ROAD (The Directory
of Open Access Resources)

ISSN- 2588-5111
ISSN International Centre
45 rue de Turbigo
75003 Paris
France

Address:

Unit 14, No.32, Malek Ave., Shariati St.

Post Code: 1565843537

Tel:+9821-77507013, 77522395

Copyright © Ariaian Young Innovative
Minds Institute, AYIMI
<http://journal.ayimi.org>

WELCOME TO THE INTERNATIONAL JOURNAL of YOUNG SCIENTIST RESEARCH

Young Scientist Research is a research journal based on scientific projects and we are pleased to present our students' work in scientific activities. This open-access journal includes young students' research in any field of science which publishes full-length and abstract research on any aspects of applied sciences in relation to work presented in both national and international conferences, competitions and tournaments of all types.

Programs that have educational opportunities for high school students to present their distinguished projects from regional, national and international events such as International Conference of Young Scientists (ICYS), International / Persian Young Physicists' Tournament (IYPT/ PYPT), International / Iran Physics' Tournament (IPT/ IRPT), International / Persian Young Naturalists' Tournament (IYNT/ PYNT) and International ISAC Olympiad.

New manuscripts sent to the Journal will be handled by the Editorial Office who checks compliance with the guidelines to authors. Then a rapid screening process at which stage a decision to reject or to go to full review is made.

By submission of a manuscript to the Journal, all authors warrant that they have the authority to publish the material and that the paper, or one substantially the same, has neither been published previously, nor is being considered for publication elsewhere.

This journal belongs to Ariaian Young Innovative Minds Institute, AYIMI, and one to two issues are published in a year. All details are on the YOUNG SCIENTIST RESEARCH Journal website (<http://journal.ayimi.org>).

Editor in Chief

Dr. Dina Izadi

Researcher & President of

Ariaian Young Innovative Minds Institute, AYIMI

ADIB, Cultural and Artistic Institute

<http://www.ayimi.org>

<http://adib.ayimi.org>

<http://journal.ayimi.org>

Email: info@ayimi.org

Unit 14, No. 32, Malek Ave., Shariati St.,

Post Code: 1565843537, Tehran/ Iran

Young Scientist Research Journal, ISSN: 2588-5111



CURRENT ISSUE
Vol 8 NO1 Sep. 2024

**COPYRIGHT © INTERNATIONAL JOURNAL OF YOUNG
SCIENTIST RESEARCH (<http://journal.ayimi.org>)**

FREEZING DROPLET

Haniyeh Parhizkari, Mahtab Shakibmanesh

ABSTRACT

If water droplets drip onto a very cold metal surface, they freeze quickly, but during the freezing process, the shape of the water droplets changes and they often become sharp, frozen droplets. This phenomenon is caused by the expansion of water during freezing and surface tension, which causes the droplet to grow taller each time it freezes in a conical shape as the volume in the upper layer of the drop increases. In this article, we will try to investigate the effect of surface tension and other parameters on this process by conducting a series of experiments.

Keywords : Water droplet, freezing, cone shape, surface tension

ARTICLE INFO

Supervisors: Hassan Bagheri, Nona Izadipناه

Accepted by Ariaian Young Innovative

Minds Institute ,AYIMI

http://www.ayimi.org_info@ayimi.org

1. Introduction

One of the unusual properties of water is its freezing from the surface. According to the laws of thermodynamics, when water molecules freeze, their density becomes lower than that of liquid molecules, so they move upwards and accumulate at the surface of the liquid. In this phenomenon, when a drop of water hits a metal plate, it starts to freeze from the surface where it hits the metal. This is because at the moment the drop hits the metal surface, due to the very high temperature difference between the metal and the drop, the molecules are deprived of the opportunity to move and the drop freezes from the surface where it hits the metal. When the drop hits the metal surface, an ice shell forms and grows upwards and progresses along the contact surface. The molecules inside the liquid volume are pulled in all directions and the resultant force on them is zero, but the molecules on the liquid surface are pulled in only one direction by the liquid molecules and the attraction force in the other direction and beyond the liquid boundary that is in the vicinity of the air and is introduced by the air molecules is less, hence the progress of the freezing process around the droplet is faster than inside the droplet, so that the liquid and unfrozen part above the droplet takes the form of a round and spherical cap. Based on the exceptional properties of water, this fluid expands when freezing. However, since in this phenomenon the water does not expand in the radial direction and expands vertically, the expansion is concentrated on the tip of the droplet and finally the combination of the two factors of expansion and the restriction caused by surface tension causes the tip of the droplet to tilt upwards.

After the formation of the cone shape of the droplet tip, the gradient or concentration change of water vapor around the tip increases. Water vapor spreads around the tip, like an electric charge that is attracted to the tip of a lightning rod, and during the condensation process (preferably) freezes on the tip of the droplet. In this article, we try to examine the parameters and factors affecting this phenomenon with some experiments and to explain and prove the cause of its occurrence more clearly (Fig. 1).

As we know, the freezing of a drop is also a function of the pressure and temperature of the surrounding environment; changing the temperature and air pressure

around the drop affects the formation of the phenomenon and leads to different results, therefore, in all experiments, the pressure and temperature of the surrounding air, as well as the humidity level, are constant .

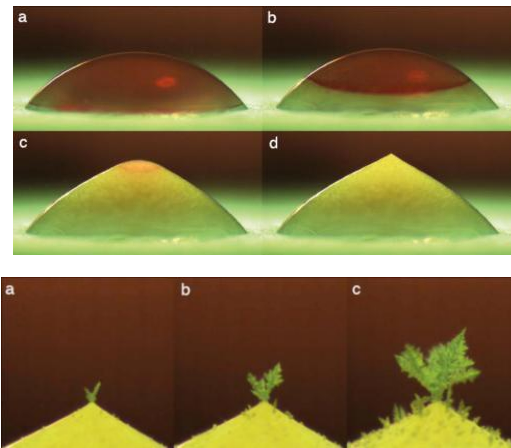


Fig. 1: The geometry of the water droplet

Another parameter whose change may affect the results of the experiments but is taken constant is the volume of the drop. It is clear that the temperature of the water drop also has a significant effect on its formation, and the lower the temperature of the drop, the faster it freezes. The temperature of the drop in all experiments was 20 °C and there was no change in it (Fig. 2).



Fig. 2: The hygrometer shows a constant number during the tests.

2. Theory

We need to know if the gravity influences on this Problem or not.

When water droplet is freezing, the radius of the spherical cap is decreasing and water is expanding upward (Fig. 3).

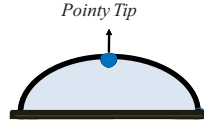
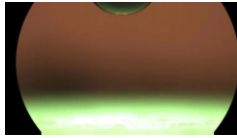


Fig. 3: The shape of water droplet

Droplet radius is too small and the Bond Number is given by:

$$\text{Bond Number} = \frac{\rho g R^2}{\gamma}$$

which in our experiment its range is: 0.25 – 0.4

As our assumptions :

- 1-Plate Temperature= T_0
- 2-The surface is Parabola shape
- 3-The Sum of θ and θ' is Constant and the surface propagates along θ .
- 4-The solidification front is planner.
- 5-The freezing process is directed along the water–vapor interface .

Philippe burnt assumed :

- The solidification front is planner.
- The freezing process is directed along the water–vapor interface (Fig. 4).

$$\tan \theta \frac{dR}{dZ} = -1$$

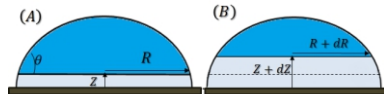


Fig. 4: Philippe burnt assumption

The geometry of the water droplet is explained as follows (Fig. 5):

$$\tan \theta = -\frac{\Delta h}{\Delta R} = -\frac{dZ}{dR} - \frac{dA}{dZ} R^2 - 2RA \frac{dR}{dZ}$$

$$\tan \theta \frac{dR}{dZ} = -\frac{\Delta h}{\Delta R} \frac{dR}{dZ} = -\left(1 + R^2 \frac{dA}{dZ} + 2RA \frac{dR}{dZ}\right)$$

$$\tan \theta \frac{dR}{dZ} = -1 - \underbrace{R^2 \frac{dA}{dZ} + 2RA \frac{dR}{dZ}}_{\text{The difference}}$$

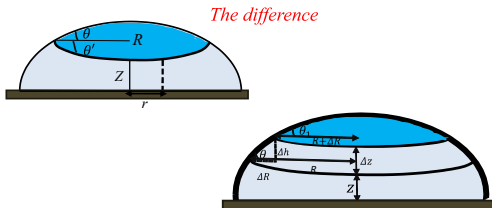


Fig. 5: The geometry of the water droplet

2.1. Mass Conservation

D.M Anderson and Philippe burnt assumed :The solidification front is planner (Fig. 6).

$$\rho_l dV_l = -\rho_s dV_s$$

$$\frac{\pi}{3} R^3 \left(\frac{3 \sin \theta - 3 \cos \theta^2 \sin \theta}{\sin^3 \theta} - 3 \cos \theta \left(\frac{2 - 3 \cos \theta + \cos^3 \theta}{\sin^4 \theta} \right) \right) = -\frac{\rho_s}{\rho_l} \pi R^2 dZ$$

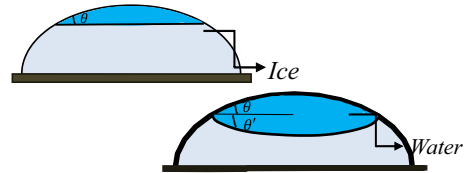


Fig. 6: Solidification shape

$$V_l = V_{sc} + V_{concave}$$

$$\rho_l dV_l = -\rho_s dV_s$$

$$\begin{aligned} & \frac{\pi}{2} R^4 \frac{dA}{dZ} + 2\pi A \frac{dR}{dZ} + \pi R^2 \left(\frac{2 - 3 \cos \theta + \cos^3 \theta}{\sin^3 \theta} \right) \\ & + \frac{\pi}{3} R^3 \left(\frac{3 \sin \theta - 3 \cos \theta^2 \sin \theta}{\sin^3 \theta} - 3 \cos \theta \left(\frac{2 - 3 \cos \theta + \cos^3 \theta}{\sin^4 \theta} \right) \right) \\ & = -\frac{\rho_s}{\rho_l} \left(\pi R^2 + \pi \frac{R^4}{2} \frac{dA}{dZ} \right) dZ \end{aligned}$$

and the contact angle:

$$\theta + \theta' = \text{Constant}$$

$$\frac{d\theta}{dz} + \frac{d\theta'}{dz} = 0$$

$$3 \text{ Differential Equation } \begin{cases} \theta + \theta' = \text{Constant} \\ \rho_l dV_l = -\rho_s dV_s \\ \frac{1}{\tan \theta} = -\frac{\Delta h}{\Delta R} \end{cases} \xrightarrow{\text{Mathematica}}$$

By using equations :

$$\triangleright \theta + \theta' = \text{Constant}$$

$$\triangleright \rho_l dV_l = -\rho_s dV_s$$

$$\triangleright \frac{1}{\tan \theta} = -\frac{\Delta h}{\Delta R}.$$

and initial condition:

$$\triangleright R_0 = 0.001m$$

$$\triangleright \theta = 120^\circ = \frac{2}{3}\pi$$

we can plot the radius of the droplet during freezing (Fig.7).

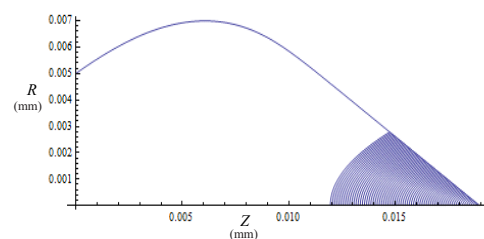


Fig. 7: The radius of water droplet Vs height

3. Experimental Setup

By taking photo in different steps the shape of the water droplet in different times during freezing is captured. Test equipment : Dropper, Metals frozen to minus 20°C, Detergent, thermometer, hygrometer, pressure gauge (Fig. 8).



Fig. 8: Photo taken in our experiment

3.1. Experiment No. 1

In this experiment we are going to investigate the difference in the material of the plate and its purpose is to demonstrate the importance of the heat capacity of the object in the freezing of the drop. In the design of the experiment, we first cover all three types of metals (iron, copper, and aluminum) with plastic and cloth bags to protect the metals from moisture and reduce the percentage of error in the experiment. Then, we cool them to a temperature of minus 20 degrees and place a drop of water on them. It is observed that the drop on the aluminum phase, which has a higher heat capacity than iron and copper metals, freezes faster and its tip becomes conical (Fig. 9).



Fig. 9: The conical shape on the aluminum phase

3.2. Experiment No. 2

Another parameter that is effective in freezing the drop is the mass of the metal plate, and it is obvious that the greater the mass of the plate, the greater its capacity to absorb heat and the faster the heat transfer between the drop and the metal. In this experiment, we tried to observe the effect of changing the mass of the plate on the freezing process of the drop. The design of the experiment is similar to the previous experiment, with the difference that here, instead of three types of metal, one type of metal with different masses was used. As expected, the drop froze faster on the metal piece that had the greater mass.

So increasing the mass of the plate can improve the freezing process (Fig. 10).

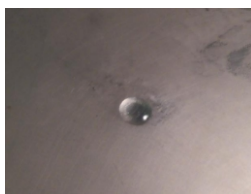


Fig. 10: The conical shape by increasing the mass of the plate

3.3. Experiment No. 3

To prove the importance of the surface tension of water in the occurrence of the phenomenon, based on the fact that impurities reduce the surface tension, an experiment was designed in which three different percentages of impurities were used and the results were analyzed and examined. Instead of pouring pure water, we used a mixture of water and detergent. Given that the molecule of this type of detergent has a polar (hydrophilic) end and a non-polar (hydrophobic) end; and on the other hand, the water molecule is also a polar molecule, as a result, the water molecule attracts the polar parts of the detergent and creates adhesion. By releasing this droplet, which is accompanied by impurities, on a metal plate whose temperature has been lowered to 20 degrees Celsius below zero, changes occurred in the freezing process of the

droplet. In the first stage, a mixture of water and 8% impurities was used and the result was almost similar to pure water and the droplet froze and its tip became conical. In the second stage, 14% impurities were used and it was observed that the droplet froze but its tip did not become conical. In the third stage, 50% impurities were used and, as expected, a droplet formed on the metal and did not freeze.

So the evidence shows that surface tension plays a fundamental role in the formation of the phenomenon and its absence prevents the phenomenon from occurring, and the lower the percentage of water purity, the lower the probability of freezing the drop (Fig. 11).



Fig. 11: The surface tension plays a fundamental role in the formation of the phenomenon

4.2. Experiment No. 4

The way the drop is placed can also affect whether it freezes or not, as well as the formation of a conical tip. The purpose of designing this experiment is to investigate how to place the drop on the screen and freeze it. In this experiment, all parameters are constant and only the drop is dropped from different distances on the screen. It is obvious that the further the drop is placed from the screen, the greater its gravitational potential energy, and when it hits the screen, it has more energy and breaks up. When the initial height of the drop is reduced, it was observed that the drop spreads out when it hits the surface on the screen, as a result it freezes, but its tip does not become conical. Therefore, it is better to place the drop from a lower height and near the surface on the screen, because if we drop the drop from a higher height, the desired result will not be obtained.

4. Conclusion

In the process of freezing a drop on a cold metal, if the temperature and mass of the drop and the metal, the way the drop is placed on the surface, and other parameters such as the drop temperature, viscosity, drop volume, ambient air pressure, ambient temperature and the water drop, and the specific heat capacity of the metal and water are appropriate and the phenomenon is formed; it is observed that the ice shell that forms from the contact surface of the drop with the metal advances upwards, and the water expands vertically and the tip of the drop becomes conical. As we observed in experiment number three, if we reduce the surface tension by increasing the impurity, the cohesion decreases and eventually the drop loses its drop shape and does not freeze naturally.

Also in this phenomenon, two basic conditions must be met. First, the drop must expand when freezing (because the drop must increase in volume so that the drop takes up more space and the added volume appears as a sharp point (or any other shape) and second, this expansion must be vertical. For the expansion to occur vertically, the surface tension of the drop must overcome its weight. This can be explained using the Bond number (the ratio of weight to surface tension). So we can say about a water drop that: When the drop is placed on a surface, the drop starts to

freeze from the bottom (the contact surface). Given the special property of water - which expands when frozen - the drop should experience an increase in volume. Now there are two possibilities: radial expansion and vertical expansion, which the water drop is prone to vertical expansion due to its bond number between 0.25 and 0.4. Therefore, the bottom of the drop expands vertically and the rest of the drop (whatever is on the frozen part of the drop) moves (shifts) upwards without changing. This continues until the tip of the drop. At the highest point of the drop, the entire surface below is frozen. Therefore, the last point shifts upwards without changing and forms a sharp tip.

References

- [1] Jacco H. Snoeijer and Philippe Brunet, Pointy ice-drops: How water freezes into a singular shape
- [2] Oscar R. Enriquez, Alvaro G. Marin, Koen G. Winkels and Jacco H. Snoeijer, Freezing singularities in water drops
- [3] <http://phys.org/news/2012-10-droplets-sharp-ice-peaks.html>

CANDLE LIGHT TRICK

Reihane Vojoudi ,Sorena Jafari, Khaje Nasir Toosi university of science and technology

Co-authors: Nicky Khodadad , Muhammad Eslamifar , Mostafa Lotfi

ABSTRACT

ARTICLE INFO

IPT/IRPT2018

Accepted by Ariaian Young Innovative

Minds Institute ,AYIMI

http://www.ayimi.org_info@ayimi.org

It is possible to relight a candle that has just been blown out by lighting the smoke that is created in the process. Indeed, the smoke contains vaporized wax which is the substance that burns in the flame in the first place. What is the maximum distance (between the match and the candle) from which one can relight the candle? Identify the important parameters and find how they influence the maximum distance.

Keywords : Candle light, Smoke, Maximum distance

1. Introduction

First, let us estimate the origin of the phenomenon observed. When you light a candle, lot happens (Fig. 1)! Heat melts wax close to the wick and the melted wax flows up the wick by capillary action. The wax is vaporized (becomes a hot gas) and its hydrocarbons break down into hydrogen (H) and carbon (C). Now gaseous wax burns in oxygen (O) to produce water vapor, carbon dioxide, heat, and light. For a paraffin candle, the balanced chemical equation is:

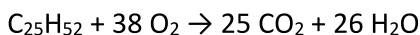


Fig. 1: The origin of the phenomenon observed

It's interesting to note that even though water is released, the air often feels dry when a candle or fire is burning. This is because the increase in temperature allows air to hold more water vapor.

The steam is made in the blue part of a candle flame, where the wax burns cleanly with lots of oxygen; the smoke is made in the bright, yellow part of the flame, where there isn't enough oxygen for perfect combustion to take place. The smoke is an aerosol. It contains a substance called "soot" which is a black material composed mostly of carbon that comes from burning organic items. (You can see soot on surfaces near or over candles and at the top of glass coverings around them.) Another component of the smoke from a candle is unburned wax vapor. This is the material that causes candle wax to appear white or gray. For a few seconds, its temperature is high enough that it will combust (burn) with the touch of a flame. It rises, of course, because it's hot so you will probably need to be above the wick to light it. The smoke trail is almost straight and you can touch the flame to any part of the trail that is connected to the wick. The wax vapor reignites and the blue flame travels along it to the wick where the candle burning process starts all over.

2. Theoretical Approach to Reach the Maximum

Distance

Take a closer look at the steps to create the desired phenomenon:



Fig. 2: A candle consists of a wax cylinder with a wick through the center. The flame melts a pool of wax at the top.

Source: <https://www.thenakedscientists.com/get-naked/experiments/jumping-flames>

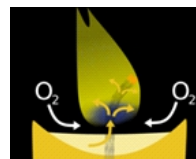


Fig. 3: The molten wax is drawn up the wick where it evaporates and then burns with the oxygen in the air.

Source: <https://www.thenakedscientists.com/get-naked/experiments/jumping-flames>

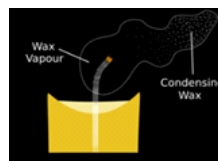


Fig.4:The wax evaporates condensing to form a cloud of smoke.

Source: <https://www.thenakedscientists.com/get-naked/experiments/jumping-flames>

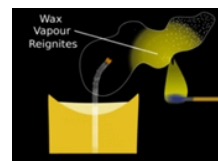


Fig. 5: The vapor is very flammable so you can relight it.

Source: <https://www.thenakedscientists.com/get-naked/experiments/jumping-flames>

There are two main approaches in order to reach the maximum distance (d_{\max}) which we can relight the candle:

1. producing smoke as much as possible.
2. Make the smoke trail move in almost linear direction as long as possible.

To achieve these two aims above, there are set of effective parameters divided into two columns:

Table 1: Parameters to achieve d_{\max}

CANDLE PARAMETERS	ENVIRONMENTAL PARAMETER
1. wax formulation	1. formulation of the air
2. wax aroma	2. oxygen density
3. wax melting point	3. air humidity percent
4. wick dimension	4. pressure / temperature
5. candle dimension	5. blowing angle
6. flame color	6. blowing power
7. flame height	

we tried to investigate how they influence the d_{\max} by theories and doing experiments. Also we used Maxwell-Boltzmann Distribution Function to calculate the most proper time to relight the candle.

3. Maxwell-Boltzmann Distribution Function

$$\frac{dN}{N} = \left(\frac{m}{2\pi k_B T} \right)^{1/2} e^{-\frac{mv^2}{2k_B T}} dv$$

$$f(c) = 4\pi c^2 \left(\frac{m}{2\pi k_B T} \right)^{3/2} e^{-\frac{mc^2}{2k_B T}}$$

$$\frac{df(c)}{dc} \Big|_{c_{mp}} = 0$$

$$C_{mp} = \sqrt{\frac{2RT}{M}}$$

$$C_{avg} = \int_0^\infty cf(c)dc = \sqrt{\frac{8RT}{\pi M}}$$

$$C_{rms} = \sqrt{\frac{3RT}{M}}$$

- dN/N is the fraction of molecules moving at velocity v to $v + dv$,

- m is the mass of the molecule,

- k_B is the Boltzmann constant, and

- T is the absolute temperature.

- R is the gas constant,

- T is the absolute temperature and

- M is the molar mass of the gas.

4. Relevant parameters – according to table (t.1)

Wax:

Candles are made up of one or more wicks surrounded by a solid material, the wax, which can be burnt. Waxes are mainly defined by their physical properties, not their chemical properties. For our purposes, we can think of a wax as a complex mixture of fatty organic chemicals that has wax like properties:

- It has a relatively low melting point above room temperature ($50^\circ\text{--}90^\circ\text{C}$) and melts without decomposition above 40°C .
- It has relatively low viscosity just above the melting point.
- It has no viscoelasticity (deforms and gradually returns to shape after a force is applied).

- It can be polished (buffed) and becomes plastic above 20°C with slight pressure.
- It burns with a sooty flame (the characteristic property of a candle).
- It's a poor conductor (of both heat and electricity)

There are several types of wax readily available for making candles today - some natural, some synthetic, some a little bit of both, and each has its own particular 8Wax, Stearin, Microcrystalline wax, wax, Gels, Paraffin Wax, etc.

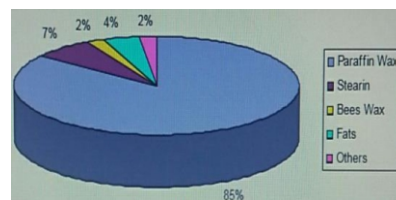


Fig. 6: Share of Raw Materials for Candles

Source: <http://candles.org/wp-content/uploads/2014/05/MatthaeiPetereit2004TheQualityCandle.pdf>

Paraffin Wax:

Paraffin is the world's most commonly used candle wax. It is composed primarily of straight-chained, saturated hydrocarbons, and is removed from petroleum during the refining process. It is a relatively hard wax and comes in a variety of melting points, which allows it to be used for many different types of candles. Developed in the 1850s, paraffin is valued for its opacity, lack of color, lack of odor and consistent burn qualities.

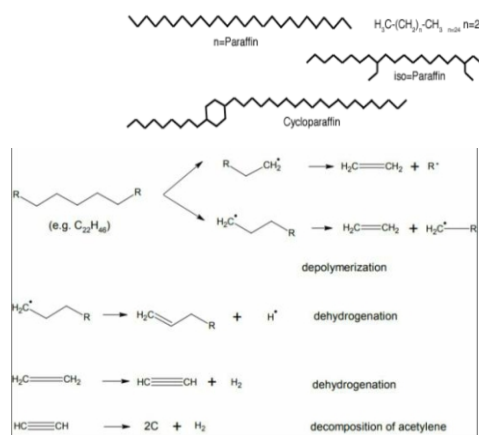


Fig. 7: Paraffin wax = C20-40 H42-82

Source: <http://candles.org/wp-content/uploads/2014/05/MatthaeiPetereit2004TheQualityCandle.pdf>

Pretty much any type of candle can be made with paraffin wax. The melting point is the primary determinant of the type of candle you can make with it.

- Low melt point paraffin (less than 130°F) is used for container candles in jars, cups or glasses
- Medium melt point paraffin (130°F - 150°F) is used for candles that need to stand on their own - votive, pillars, and other molded candles
- High melt point wax (greater than 150°F) is used for more special applications like hurricane candle shells, over dipping, and other special candle making applications

Wick:

wick, often referred to as the soul of the candle, plays a

central role when regarding candle quality. It has a decisive influence on the burning behavior of the candle and is included in discussions about candle quality especially with regard to its composition and combustion products formed in/by it.

The wick is mainly made up of braided cotton threads which are usually treated with inorganic compositions. Long, fibrous cotton with a uniform structure produces the best results. The fibers have a major influence on capillary action, wick stance and ultimately the ability of the wick to self-trim. The inorganic elements of the wick treatment prevent afterglow of the wick when it is extinguished. The formation of a crystal skeleton after the chemical treatment process increases the stability of the wick.

The strength and number of the fibers as well as the type of braiding (mainly differentiated between flat and round wicks) determine the capillary action and stability of the wick. The curve of the wick in the flame can be influenced by the introduction of special tension or stability threads.

The choice of wick and candle material used, together with the diameter of the candle, must complement each other optimally to ensure the ideal burning of the candle. The wick regulates the melting, absorption, evaporation and burning of the fuel used.

There are many tables which can show us each kind of wicks with their most important properties and applications as well, in order to make choosing process scientifically.

Table 2: Different kinds of wicks with their most important properties

Core Type	Burn Rate
Cotton	2.51- 8.19
Paper	3.03 – 8.65
Zinc	1.65- 7.24

Flame:

When observing a candle flame the following schematic structure can be seen:

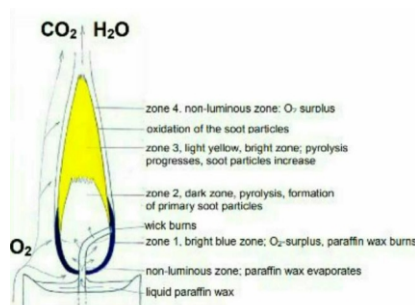


Fig. 8: The structure of a candle flame

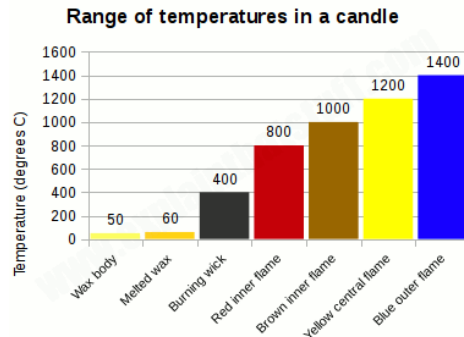
Source: <http://candles.org/wp-content/uploads/2014/05/MatthaeiPetereit2004TheQualityCandle.pdf>

Here are some approximate temperatures for the different parts of a candle and its flame. Note that the exact temperatures vary quite a bit depending on all kinds of different factors, notably the type of wax from which the candle is made but also the ambient (air) temperature, and how much oxygen is present. Please don't take these values as absolutely definitive ones that apply in all cases—they're just a rough guide.

1. Wick: 400°C (750°F).
2. Blue/white outer edge of the flame (and also the blue cone underneath flame where the oxygen enters): 1400°C (2550°F).
3. Yellow central region of the brightest part of the

flame: 1200°C (2190°F).

4. Dark brown/red inner part of the flame: 1000°C (1830°F).
5. Red/orange inner part of the flame: 800°C (1470°F).
6. Body of the candle: 40-50°C (104-122°F).
7. Melted pool of wax on top of the candle: 60°C (140°F).



5. "COMSOL" Analysis of Burning Candle

As we are still in the beginning of experimental phase, we used COMSOL analysis of burning candle in order to gather more scientific information to make designing experiments easier and clarify the results we want from them.

- Simplifying Assumptions

Heat of combustion approximated by a simple heat source

Stationary analysis

Symmetric boundary conditions

Source:

https://www.comsol.com/paper/download/62922/koppenhoefer2_paper.pdf

- Model setup

Air flow is described by conservation of mass, momentum, and energy.

$$\nabla \cdot (\rho \mathbf{u}) = 0$$

$$\rho \mathbf{u} \cdot \nabla \mathbf{u} = -\nabla p + \nabla \cdot \left(\eta (\nabla \mathbf{u} + (\nabla \mathbf{u})^T) - \frac{2}{3} \eta (\nabla \cdot \mathbf{u}) \mathbf{I} \right) + \rho \mathbf{g}$$

$$\nabla \cdot (-k \nabla T) = Q - \rho c_p \mathbf{u}$$

Conduction in the solid domains:

$$\nabla \cdot (-k \nabla T) = Q$$

Surface heat flux due to radiation:

$$q_r = \varepsilon (G_m + F_{amb} \sigma T_{amb}^4 - \sigma T^4)$$

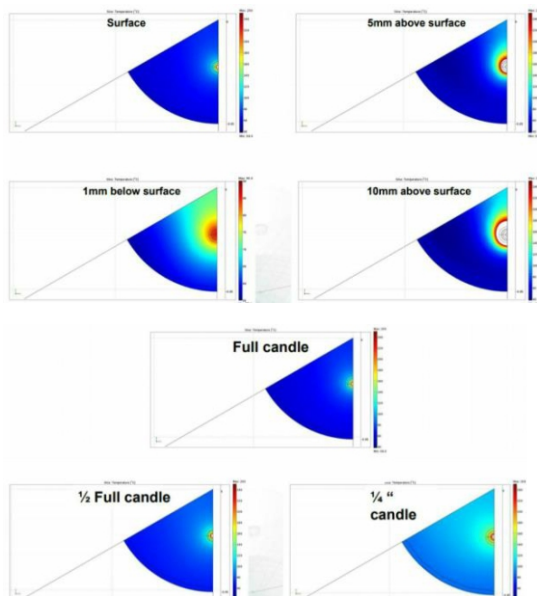
Mutual irradiation (Gm):

$$J = (1 - \varepsilon) (G_m + F_{amb} \sigma T_{amb}^4) + \varepsilon \sigma T^4$$

Heat flux q_r is set to zero at the boundary. Source term is included in the flame region to account for cooling due to radiation.

6. Results

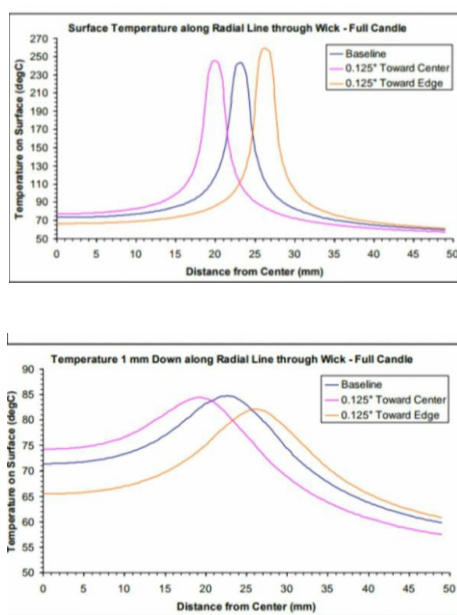
Temperature at Wax surface:



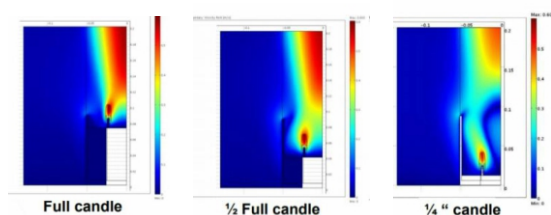
Source:

https://www.comsol.com/paper/download/62922/koppenhoefer2_paper.pdf

Wick location:



Flow:



7. Experiments

These are the designed experiments we're going to do to investigate important factors on d_{max} . Important note: recording environmental conditions during all of experiments have to be done.

1 Wax formulation:

use 3 samples of typical waxes (paraffine, stearine, beeswax) with same amount of mass, Do the relighting process on each of them and by repeating this experiment, find the d_{max} for each sample.

Paraffine:A | stearine:B | beeswax:C

- Recording environmental conditions: (including : pressure, temperature , volume of the experiment room, air flow, ...)
- Recording distances (between the match and the candle) from which one can relight the candle
- Averaging of recorded distances
- Considering the errors in the measuring and recording devices and also the experimenter,

2 Wax aroma:

Use candles with and without aromas , with different kind of aromas and different densities

Investigate is it effective on the amount of smoke which is created after blowing flame out ?

3 Wick dimension:

Use same kind of wax (it's better to choose best wax by considering the result of 1st experiment) with different dimensions in its wick and investigate how it influence d_{max} .

- Use wicks with different length
- Use wicks with different cross-section diameter

4 Candle dimension:

Rebuild candles with different dimensions by melting same amount and type of wax.(it's better to choose best wax by considering the result of 1st experiment)

- Use waxes with different length
- Use waxes with different cross-section diameter

5 Flame colour:

Use candles with different flame colours , investigate its effect on this phenomenon.

6 Formulation of the air:

Use a clean room and give it the measured amount of oxygen, nitrogen, carbon dioxide and other gases present in the air, investigate the effect of this factor by making changes in the formulation of the air you gave it.

- Pay attention to all the reactions occurred in the process
- The effect of oxygen density and air humidity percent can be investigated by this approach too.

7. Temperature/pressure:

Do the same experiments in different temperatures and pressures , investigate the effect of these parameters by recording the d_{max} in each experiment.

- Consider the influence of temperature on wax melting point.

8 Blowing angle/blowing power:

Use a device with can gave you air flows with controllable powers and angles, then investigate the effects of these two parameters and find proper power and angle for blowing the flame out , in order to reach the maximum distance (between the match and the candle) from which one can relight the candle.

References

- [1] Characterization of Candle Flames-ANTHONY HAMINS* AND MATTHEW BUNDY National Institute of Standards and Technology Gaithersburg, MD 20899-8663, USA
- [2] The Quality Candle - Dr. Michael Matthäi - Dr. Norbert Peterleit
- [3] Characterization of Pollutants Emissions from Burning Candles, S. Gelosa, M. Derudi, A. Sliepcevich, D. Gelosa, G. Nano, R. Rota Dipartimento di Chimica, Materiali e Ingegneria Chimica "G. Natta"/CIIRCO - Politecnico di Milano, Milano - ITALY
- [4] Analysis of Burning Candle L.T. Gritter, J.S. Crompton*, S.Y. Yushmanov and K.C. Koppenhoefer AltaSim Technologies,

STATIC SPEAKER

Seyed Mohammad Hoseini Yamin , Shahid Beheshti University
Co- Authors: Reza Pourkodabakhshi, Sina Ghafouri, Armin Tabesh

ABSTRACT

ARTICLE INFO

IPT/IRPT2018

Accepted by Ariaian Young Innovative

Minds Institute , AYIMI

http://www.ayimi.org_info@ayimi.org

Producing sound in different conditions is conceptually interesting. In the other hand, use of sounds for our objectives are attractive, too. For example, some people think about thermoacoustic engines to make heat with sound and reversely produce heat using of sound. The last has more application for our routine life. Here with the aid of fundamental concept of Physics we were able to produce sound in new way. We use the fourth discovered phase of matter, plasma.

Keywords : Sound, Plasma, Thermoacoustic Engines

1. Introduction

Producing sound in different conditions is conceptually interesting. In the other hand, use of sounds for our objectives are attractive, too. For example, some people think about thermo acoustic engines to make heat with sound and reversely produce heat using of sound. The last has more application for our routine life. Here with the aid of fundamental concept of Physics we were able to produce sound in new way. We use the fourth discovered phase of matter, plasma, as you know, is the quasi-neutral gas phase material that consist of ions with same number of electrons. Ions must satisfy two conditions. One is that in the media there must be a Restoring force that affect the wave fronts. Here compressibility of gas provides it for us and second is the media must have inertia. Inertia refer to property of matter does not enable a body to do anything except oppose such active agents as forces and torques. In fact, the inertia of the ions allow the sound propagate through matter. If there not be inertia, the agents that transport the mechanical wave (sound) will move with the wave and we can't detect anything. Maybe just some noises. A plasma arc speaker is an improvement on the traditional diaphragm loudspeaker because the driver, electrical arc has very little mass and low inertia, reducing distortion. It is capable of producing very high frequencies due to its ability to move very small quantities of the gas.

The ions in plasma have sound-like Response, however electrons participate in these oscillations. This sound-like behavior named, Ion Acoustic Wave.

2. Related reports, technologies or devices

1. One of the interesting works on this area is Graphene Speaker. For the aid of producing sound, they flow current through Graphene. To produce sound, the grapheme layer is rapidly heated and cooled, which in turn causes the surrounding air to expand and contract, creating sound waves. By strategically controlling the alternating electrical current flowing through the Graphene, the scientists also found they can mix frequencies together, and even amplify or equalize specific sounds. Which means the amp, EQ, and towering speakers that make up most home stereos might one day be replaced by a single, solid-state device.

2. A cone less, no-moving-parts dynamic speaker has its internal components firmly locked within a plastic housing structure to prevent their movement relative to the housing. During operation of the speaker, mechanical sound energy that it creates is transmitted through the walls and ceiling of the room to provide an expanded sound generation pattern. The internal components of the speaker include a voice coil internally anchored to a wall of the housing, an annular magnet member sandwiched between and fixedly secured to first and second annular metal washer members, and a metal alignment shaft having one end closely received in the core portion of the voice coil, and an opposite, radially enlarged end press-fitted into one of the washers and forming with the side surface of the central magnet member opening a reverberation chamber which is closely adjacent the voice coil but does not physically receive the coil. In an alternate embodiment of the speaker the housing is foreshortened in a manner exposing the magnet member and the washer member into which the radially enlarged end portion of the alignment shaft is press-fitted.

3. Another amazing device is Controlled Resonance Technology. It does not use conventional drivers to reproduce sound. CRT on the other hand uses a soundboard much like a musical instrument to reproduce sound. The soundboard uses resonances to generate sound-wave. By generating resonance originating from multiple locations on the board. A board frequency range can be generated within very small fluctuations in amplitude.

4. As an idea in our objective is producing sound by strong electromagnet that change its polarity and then push and pull the charged gas that surrounded the electromagnet. Finally alternating of polarity of electromagnet will produce pressure waves or roughly speaking, sound.

3. Aims and methodology

As was explained in abstract, we use plasma for producing sound. Plasma has two different type named Warm plasma and Cold plasma. Here we use cold arc plasma. The temperature of electron in such plasma can reach about 3ev (1ev ~ 11600 k) then the "cold" refers to ions and ambient neutral species.

Plasma can be created with arc discharge in The Gas. Arc

regime is third discharge regime after Glow discharge and Corona discharge. When the high-voltage power supply applied between two electrodes, first corona regime that is ionizing of atoms near high voltage probes so combination of electrons and ions will appear and with increasing the discharge current, those two region get together that basically create region of the gas that's basically full of electrons and ions that named "plasma". It essentially become a conductor and goes too huge current between two probes. This is called an arc discharge.

Since the plasma was made of Electrical Arc, it is important to mention plasma arcs have a major advantage. They have no resonance or transient problem. Most audiophiles know that the lighter the material used in a speaker, the faster the response can be, and the better transient they produce. Plasma speaker, works by moving air via changing the temperature in its chamber. A plasma speaker uses an electrical arc to ionize and compress the air around it to play music, all with no moving parts! Actually plasma arc loud speaker has a better frequency response far exceeding the material of speaker cones.

It's so important to say that the speed of sound in plasma is bigger than its speed in air. Another advantage about plasma is the speed of electron with considering motionless ions is much bigger than propagation speed of sound and subsequently, we don't face with resonance of sound wave and it causes to be any noises on played music and we detect frequencies of played music sharply in the contrary of ordinary speakers. Meanwhile for many purposes, the conductivity of a plasma may be treated as infinite.

Starting with simplified one-fluid equations with considering a field-free uniform plasma ($E_0 = B_0 = P_0 = V_0 = 0$) of hot electrons and cold ions and then considering small perturbation in density and velocity about steady state with linearization and simplifying and providing third equation that is poisson's equation we reach to dispersion relation for plasma and with solving $\epsilon(\omega) = 0$, propagation modes will be found.

$$\partial_t(n_{i,e}) + \partial_x(n_{i,e} V_{i,e}) = 0$$

$$\partial_t(V_{i,e}) + V_{i,e} (\partial_x(V_{i,e})) = -q_{i,e}/m_{i,e} (\partial_x(\phi))$$

$$\partial_{xx}(\phi) = -4\pi e(n_i - n_e)$$

With the approximation $n_e = n_i$ and $V \cdot \nabla V = 0$, these reduce to the one-fluid equation.

Small harmonic perturbations are:

$$n_\alpha = n_{\alpha 0} + \hat{n}_{\alpha 1}(x)e^{-i\omega t}$$

$$V_\alpha = \hat{V}_{\alpha 1}(x)e^{-i\omega t}$$

$$E = \hat{E}_1(x)e^{-i\omega t}$$

$$B = \hat{B}_1(x)e^{-i\omega t}$$

So the continuity equation for the perturbed density and velocity is:

$$i\omega n_{i1} - in_0 K \cdot V_{i1} = 0$$

$$i\omega n_{e1} - in_0 K \cdot V_{e1} = 0$$

The momentum transport equation for the perturbed quantities, including electron pressure, is:

$$-i\omega V_{i1} = e/m_i E_1$$

$$-i\omega V_{e1} = e/m_e E_1 + (iK\gamma p_0/n_0 m_e)(n_{e1}/n_0)$$

Where γ is the intrinsic feature of the gas that here for air is equal to 1.

Poisson's equation provide a third relation between n_i , V_i and E_i .

$$iK \cdot E_1 = -4\pi e(n_i - n_e)$$

Eliminating V between Eq.5 and Eq.6 and then substituting n_{i1} and n_{e1} from state equation for ideal gases ($p = nk_B T$) into Eq.(7) gives this result:

$$(1 - (\omega_{pi}/\omega)^2 - (\omega_{pe}/\omega)^2(1/(1-(K^2/\omega^2)(\gamma k_B T_e/m_e)))) K \cdot E_1 = 0$$

A reasonable choice of γ might be $\gamma = 1$ from isothermal processes. From equivalent dielectric constant for a plasma of warm electrons and cold ions is:

$$\epsilon = (1 - (\omega_{pi}/\omega)^2 - (\omega_{pe}/\omega)^2(1/(1-(K^2/\omega^2)(\gamma k_B T_e/m_e))))$$

Instead of using Poisson's equation, Eqs. (5) and (6) can be combined with Maxwell's equation:

$$\nabla \times \mathbf{B} = (4\pi\mathbf{J}/c) + (1/c) \partial_t(\mathbf{E})$$

To give

$$\nabla \times \mathbf{B}_1 = -i\omega \epsilon E_1$$

Now K dotted into Eq.(9) yields to Eq.(7), singling out the electrostatic waves ($B_1 = 0$).

In addition, Eq.(9) includes electromagnetic waves ($K \cdot E_1 = 0$, a wave with its electric field perpendicular to its direction of propagation.)

So dispersion relations become:

$$\omega^2 = \omega_p^2 + (k_B T_e/m_e)K^2$$

$$\omega = \omega_p(1 + k_B T_e/m_e \omega_p^2 K^2)$$

$$\omega = K((k_B T_e/m_i)^{1/2} / (1 + k^2 \lambda_{De}^2))^{1/2}$$

where:

$$\lambda_{De} = k_B T_e / 4\pi n e^2$$

The dispersion relation is still valid only for long-wavelength disturbances, i.e, for $K^2(k_B T_e/m_e) \ll \omega_p^2$ (equivalent to $K^2 \lambda_{De}^2 \ll 1$), so the sound wave propagate with the speed:

$$\partial_K(\omega) \approx C_s = (k_B T_e/m_i)^{1/2} \ll (k_B T_e/m_e)^{1/2}$$

And is less than the electron thermal speed. It's necessary to mention that our assumption ($\gamma = 1$, propagation of sound in plasma is isothermal processes) is valid because the electrons moves faster than the wave fronts or, roughly speaking, the ions and so they dose not sense any change in their surrounding temperature. It means that propagation of sound in plasma pass an isothermal process.

4. Experiments and Results

Setup was constructed from a high-voltage power supply, a pulse generator and two electrodes. Pulse generator provide our arbitrary music with coupled frequencies and put it on plasma via high-voltage power supply (Fig. 1).

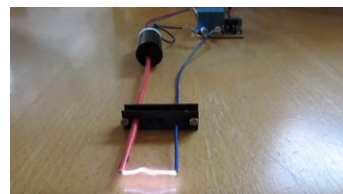


Fig. 1: Experimental Setup

In the below there is comparison of "Amplitude – Impulse Response (Frequency Response)" plots between two different speakers. As you see the Plasma speaker (left plot) enjoy a clear and noiseless impulse response. While in the RealTek HD speaker (right plot) the frequencies did not detect sharply and there is a lot of noises in output sound (Fig.2).

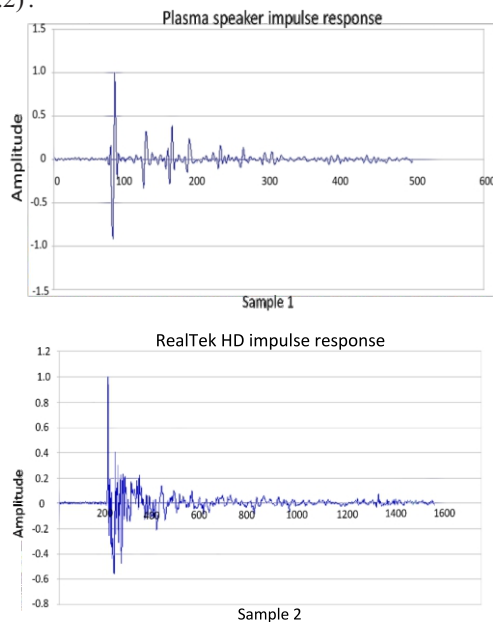


Fig. 2: comparison of "Amplitude – Impulse Response (Frequency Response)" plots between two different speakers

A plasma arc speaker was made and its operation was studied. By use of the plasma speaker we have attempted to study the phenomenon of electric discharge through the ionization of air molecules.

The plasma speaker has unparalleled performance and fidelity in the higher ranges. The unique nature of its "massless" driver gives it very low coloration. As a specialized tweeter it may do very well in combination with a subwoofer. Low frequencies are naturally less directional than high frequencies, so a conventional subwoofer in combination with a plasma tweeter could theoretically show an even frequency response.

References

*This analysis belong to Sylvan Zheng.

An interactive report on the acoustical qualities of a plasma loudspeaker

Plasma Speaker Experiment | Princeton Plasma Physics Lab

MAGNETIC HILLS

Mohaddeseh Masoumi

ABSTRACT

ARTICLE INFO

Supervisor: Hassan Bagheri

Accepted by Ariaian Young Innovative

Minds Institute , AYIMI

http://www.ayimi.org_info@ayimi.org

A small amount of a ferrofluid placed in an inhomogeneous magnetic field forms hill-like structures. Magnetic Ferrofluids (MFFs) are colloidal suspensions made up of tiny ferromagnetic particles, about 10nm in diameter, suspended in a carrier liquid and have magnetic and liquid properties simultaneously. Ferrofluid surface is exposed to a heterogeneous magnetic field which instead of being flat or curved, it is a convex surface or nails-like protrusion. In this research we are going to investigate how the properties of these structures depend on relevant parameters.

Keywords : Ferrofluids- colloidal solution - heterogeneous magnetic field- Magnetic Peaks

1. Introduction

Magnetic Ferrofluids (MFFs) are colloidal suspensions made up of tiny ferromagnetic particles, about 10nm in diameter, suspended in a carrier liquid and have magnetic and liquid properties simultaneously. Ferrofluid surface is exposed to a heterogeneous magnetic field which instead of being flat or curved, it is a convex surface or nails-like protrusion. Its reason is applying of too much magnetic forces which causes the interaction between surface forces. It should be noted that ferrofluids are liquid in normal states but solid when approaching a magnet (<http://nanoclub.ir>).

2. Definitions Regarding Different Parameters

Magnetic field: is the medium of the influence of two charges and is generated by moving electrical charges. When there is a moving charged particle, a magnetic field is generated in its surrounding.

Every magnetic field has the lines called magnetic field lines (David Halliday, Robert Resnick, Kenneth Crane, 2002, page 199). The direction of moving of the lines are in clockwise direction, "coming out" of the North Pole of a magnet and "going into" the South Pole of a magnet.

When you pour some iron powder on a paper near a magnet , the iron powder immediately form the magnetic field lines. This shows the magnetic field around the magnet.

Ferrofluids : Ferromagnetics are the materials which are attracted and form in the same direction if placed against a magnetic field. In other words, its magnetic dipoles are aligned.

Ferromagnetics are divided into two categories: hard ferromagnetics and soft ferromagnetics. Soft ferromagnetics are the materials that are easily converted to magnet and easily lose their magnetism characteristic. Hard ferromagnetics are the materials that are hardly converted to magnet and hardly lose their magnetism characteristic (<http://edu.nano.ir>).

Ferrofluid is a liquid that is attracted to the poles of a magnet. It is a colloidal liquid made of nanoscale ferromagnetic or ferromagnetic particles in a carrier fluid.

Pole and pole density: Magnetic poles that are the two ends of the magnet, which have more magnetism rather than other parts of the magnet. If you divide a magnet into

smaller pieces, again there will be the two N and S poles calling them the magnetic dipole. The density of magnetic field lines are more in magnet ends wherever the density of magnetic field lines are more, the attraction and repulsion is stronger (www.chap.sch.i).

The more the number of magnetic field lines per unit area, the more the density of the pole. Pole density can be the power of attraction and magnetic field. The more closer to the poles, the more the pole density will be and the more closer to the middle ground between the two poles, the less pole density will be.

Magnetism is a phenomenon that is occurred on the surface; therefore magnetism is a surface phenomenon, not a volumetric one. It should be noted that the densification of poles occurs on magnet surfaces.

Surfactant: The particles dispersed in ferrofluid are Colloidal, but after a short time they get together and form larger particles. The smaller the particles are, the better the solution exhibits magnetic properties. That is why materials called surfactants are added to the solution which prevents the particles from joining together and particles lose their magnetism over the time (www.rasekhoon.net). It should be noted that the surfactants reduce the surface tension and the surface material is active. The surface active molecule should be partially hydrophilic and lipophilic (www.britannica.com).

3. Experimental Setup

Ferrofluid Recipe:

- 1) Prepare 10.77 grams of developer (Fig. 1)
- 2) Prepare 1/8 cup or 16 grams of toner (Fig. 2)
- 3) Prepare 19.84 grams of oil (Fig. 3)
- 4) Mix the ingredients and density of ferrofluid:1.86 (Fig. 4)

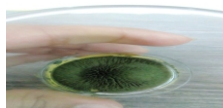


Fig. 1: Developer



Fig. 2: Toner



Fig. 3: Oil



Fig. 4: Mixing result

4. Determination of Ferrofluids Formation

1) A full Ferrofluid never precipitate.
 2) Ferrofluids have hexagonal structure; because hexagons cause all the surface be involved and causes the clusters be formed. If the surface is in another form, all the surface will not be involved, leading to not creation of bulges.

Examined materials for Ferrofluid creation:

- 1) Developer + water
- 2) iron powder + castor oil
- 3) Developer + oil (preferably vegetable)
- 4) developer + Acetone
- 5) developer + Children's Body Oil
- 6) developer + oil
- 7) developer + Petrol
- 8) developer + Toner + Oil
- 9) Cassette + Acetone + oil

5. Reason of Magnetic Peaks Formation

The main reason for Formation of magnetic peaks, is magnetic field lines; the magnetic peaks are the magnetic field lines that are displayed in three dimensions. The more the magnetic field lines are, the more the peaks with higher altitudes will be generated.

In addition, the height and number of them depends on magnet strength, the magnetic field lines, and pole density. It should be noted that the bigger the magnet is, the more the number of generated peaks and the greater their height. Each of the generated clusters are small magnet themselves that if we approach a magnet, they will be attracted.

6. Surveyed parameters

- 1) Change in the container level
 Small surface: 4 cm (about 50 clusters). (Approximate height of the highest cluster: 1.27 mm)
 Vast surface: 9 cm (about 150 clusters). (Approximate height of the highest cluster: 1.55 mm)

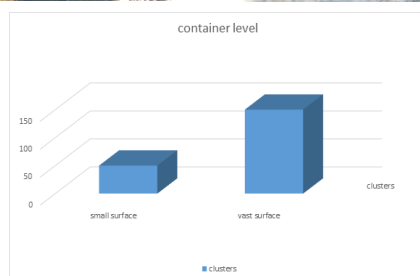


Fig. 5: The clusters in two different vessels

2. Change in thickness of Ferrofluid container
 Cellophane thickness: 0.02 mm (almost 150 clusters). (Almost height of the highest cluster: 1.70 mm)
 Glass thickness: 5.16 mm (almost 300 clusters). (Almost height of the highest cluster: 1.38 mm)

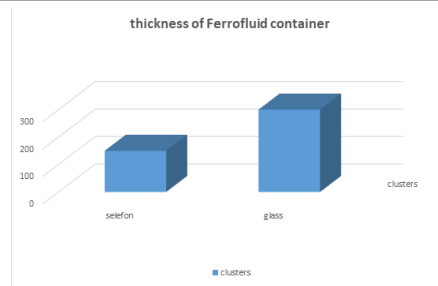


Fig. 6: The clusters in two different Ferrofluid container

3. Size of the magnet
 Big magnet: 4 cm (almost 400 clusters). (Almost height of the highest cluster: 5.2 mm)
 Small magnet: 1.5 cm (almost 20 clusters). (Almost height of the highest cluster: 2.3 mm)

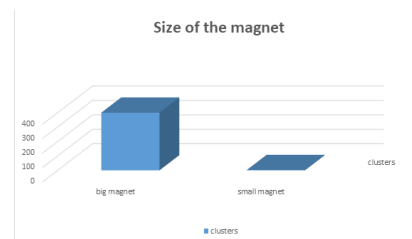
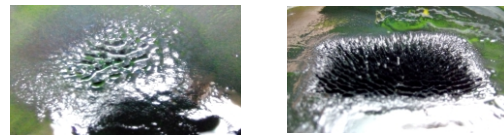


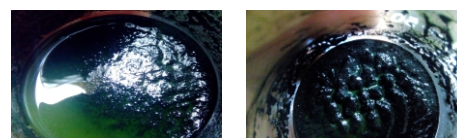
Fig. 7: The clusters with two different size of magnet

4. Change in Ferrofluid temperature
 32°C : (almost 100 clusters). (Almost height of the highest cluster: 1.9 mm)
 -4°C : (almost 300 clusters). (Almost height of the highest cluster: 2.1 mm)



Fig. 8: The clusters in two different temperatures

5. Change in volume of Ferrofluid
 High volume: 25 ml (Almost 10 clusters). (Height negligible)
 Low volume: 12.5 ml (Almost 30 clusters). (Height of the highest cluster: 2.7 mm)



- 6) Type and size of the constituent particles
The more nanometer particles, the better magnetic properties the Ferrofluids will have.
- 7) Concentration of Ferrofluids
Ferrofluids concentration is very important, because if the concentration is too high, less peaks are generated and the less the concentration of Ferrofluid, the more peaks and the more their height.
- 8) Pole density and magnetic field lines
The more the density of the pole, the more the number of magnetic field lines; consequently the more the number of peaks and their heights.
- 9) Amount of surfactant
The amount and type of surfactant in Ferrofluids has great importance. Surveyed: soap, shampoo, dishwashing liquids, etc.
- 10) Ferrofluids Color Change
Ferrofluids color depends on the constitutive magnetic particles color; For example toner Ferrofluid is black; developer Ferrofluid color is green; cobalt Ferrofluid is blue, and copper Ferrofluid is red. It should be noted that particles change in Nano-scale.

7. Conclusion

The more the surface of Ferrofluids, the more peaks will be generated, but there will be not such change in their height and the more the thickness of the container, the more peaks with sharper tips and lower heights will be generated. The larger the magnet is, the more peaks with higher heights will be. As the temperature of Ferrofluid increases, with approaching a magnet to the Ferrofluid, peaks are generated easier and faster than the ones in low temperature but the number of peaks and their heights are lower than the ones in cold temperatures, and the peaks have sharp tips in negative temperatures. The larger the volume of the Ferrofluid, the less clusters with lower heights will be and the lower volume, the more clusters with higher heights will be.

References

- [1] Hoseyni, A.R., and Torani Roshan, T.R., (1388), Electricity magnetism and wave, Fatemi Publishers, pp 92-133
- [2] Pezeshpour M.A., Motamedi Esfandiar, M.S., Second Edition (1381), Electromagnetic induction and alternating current, Fatemi Publishers
- [3] Edward M. Purcell, David J. Morin, (2013), Electricity and Magnetism, Cambridge University Press
- [4] B. D. Cullity and C. D. Graham, Second Edition (2009), Introduction to magnetic materials
- [5] Helmut Kronmüller, Stuart Parkin, (2007), Handbook of Magnetism and Advanced Magnetic Materials, Wiley Publish,
- [6] <https://www.britannica.com/science/surfactant>

CANDLE LIGHTING TRICK

Seyed Mohammad Hoseini Yamin

Co- Authors : Reza Pourkhodabakhshi , Seyed Mohammad Hoseini Yamin , Armin Tabesh , Sina Ghafouri
Shahid Beheshti University, Tehran, Iran

ABSTRACT

ARTICLE INFO

IPT/IRPT2018

Accepted by Ariaian Young Innovative

Minds Institute , AYIMI

http://www.ayimi.org_info@ayimi.org

Indeed, in this essay we are searching for finding an explanation to our problem. Why we can relight a candle from upside by a little distance of candle's top part? Actually we have some probable solutions for solving this problem. Some solutions are focused on paraffin part of candle. Some are focused on hot air that existed around candle. And other ones are which that we try to solve it by theories that insist on external elements which can effect on phenomenon.

Keywords : Candle, Paraffin, Hot air, Lighting

1. Introduction

Indeed, in this essay we are searching for finding an explanation to our problem. Really why we can relight a candle from upside by a little distance of candle's top part?

Actually we have some probable solutions for solving this problem. Some solutions are focused on paraffin part of candle. Some are focused on hot air that existed around candle. And other ones are which that we try to solve it by theories that insist on external elements which can effect on phenomenon.

First approach is made of theory that says relighting of candle is the cause of that evaporated paraffin and some fine particles of paraffin wax ; existed in around air of candle due to flame heat , so they will be alight by approximating a burning object to them.

Another one approach is based on heated air that existed around of candle, above it. Actually this insist on that the burning air reaches to the top of candle by effect of Archimedes' law that causes moving of fluid materials by their density. And then, burning air will relight candle.

And then the last theory is made of checking external elements that could effect on phenomenon and by checking them, we can talk about some explanations that are about burning source of fire and some other such as this.

For gaining a logical theory and reach to a strong solution which could win other explanations, we are forced to construct some tests. Our experiments are searching for testing our theories. Some are for testing that this phenomenon are because of paraffin or heated around air.

And some other ones are for testing that have any external elements, any important effect on this phenomenon. For reaching the answer we will construct some tests and will study results.

At the end we will study results and will construct a strong logical theory for solution and then study our solution's scientific features.

2. Related Reports, Technologies or Devices

By a simple search on internet, we will face to many fantastic results. For this phenomenon there is no important experiment that its aim be focused on gaining a scientific explanation for it. And also there is no scientific essay in scientific search engines. For this problem there

are some homemade experiments that are done by people, are recorded into video tapes and can be found on YouTube enough. These videos are recorded sometimes by experts and are under controlled laboratory conditions.

Actually we need to search for some key words by search engines and we will have some experiments with related results which their laboratory conditions are acceptable; of course under some determined limits.

In their experiments ; in almost more of them, the basic approach is about finding a way for relighting of candle, but without straight contact between candle burning part and a burning source of fire such as match. Then we can understand that there is a logical relation between burning source and top part of candle that burns, which can transfers enough heat to top part of candle in order to lighten it.

In almost all of them the only thing that is under studying, is the base of phenomenon and other aspects of phenomenon have not been tested in experiments.

Some fantastic and useful experiments are shown in footnote. It is good for reaching a scientific and logical explanation of phenomenon that see these videos online.

3. The Aims and Methodology

The same explained in previous section of essay, we mentioned that did not exist any strong and scientific approach and experiment that in it we could study every logical and scientific aspects of phenomenon. By the time there are no test could exam different theories that exists about explaining phenomenon.

We know that human mind logical perception always chooses some choices between others that they have needed adaptations to its limits. By this, we know that our choices will be limited by approaches which are about relations of relighting and three important factor.

Our method for testing these theories is experimentalism. Actually it determined by its many exams to test a theory. Theory could passes successful test or fails it.

Indeed we gain a totally and finally result based on limited observations that we could had through experiments. And those result which we named it a true theory, is just a theory that is not in contrast with any experiment which we done up to now.

It does not mean yet that it is a logical base or a natural

law.

We know that in laboratory for testing an elements and its effect on phenomenon we must fix any effective element in the experiment and then change one which is our purpose to be tested. Then we will gain some results that its changes is based on determined element. We can lighten a simple candle in a room with closed doors and windows due to air flow; air should be stable on a table. Then we relight it after a little minute by a burning source at top of candle. We can change source of fire for relighting every time. Once fired matches, once lighter and so on.

Other experiments are focused on two other elements that distinction between them is a little harder. We try relighting a simple candle that is turned off recently by setting up a burning source at top of candle.

Then we can change discussion subject by trying to relight a recently turned off candle's thread singly. If paraffin wax had any effect on phenomenon, by bringing out its thread and testing it singly, experiments results must change basically.

Another aim. Distance. We construct a series of experiments. For relighting in standard equal laboratory conditions but at different distances. And we will retry this experiments for different diagonals of candles and finally different dimensions of burning fire of candle. The constituent paraffin is important but its experiment is not focused in this essay.

Some factors such as density of air and air flow of room are not discussed.

Let's continue, we then will reach some limits to relighting it from around it and we will gain a maximum limit for it. And some limits for angles from vertical line to relight it. These are our basic methods to reach limits of relighting.

4. Experiments and results

In this chapter we want to know that our tests how work and what results is gained through experiments. Our experiments must will be in a laboratory condition room. This could help us to approaching less effective changing test elements.

Experiments guide us to find out how relights of candle works. First constructed experiment. We did change of external sources and then move to reach a logical explanation for results. No difference among relighting times or intension of fire not observed. Important part is just heat, fire.

Now let's see about effect of paraffin wax and hot air. We describe experiment previously. By standard scientific conditions we be sure our tests are reliable. One of our theories was that hot burning air around source of fire will reach to candle, because top of candle vertically has hot air that is heated by candle before, then new burning source has a fire. Then if burning part of source that is made of burning air, fuel or material, and some heated around air; had more density than air of top of candle, it will flow down to candle and relight it while candle's upside air perhaps had some particles of burning object that will effect on air density.

Then we must study something. What is paraffin. It is some kind of alkane with general formulation of $C(n)H(2n+2)$. Paraffin wax can its formula change among ($n = 20$) to ($n = 40$) in above mentioned formula. Let's show you some figures.

We will see in figure (1) that our products are H_2O , CO_2 , OH , C_2 , some carbon particles that will stay unburnt. In figure (2) we see that some evaporated wax particles existed in black soot of candle. Unburnt carbon particles and evaporated paraffin wax particles.

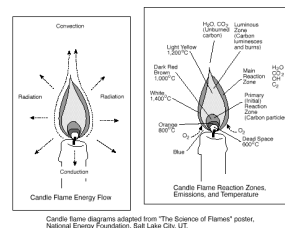


Fig. 1: Some carbon particles that will stay unburnt.

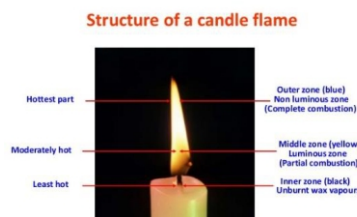


Fig.2: Some evaporated wax particles existed in black soot of candle

Note we can not say that because burning is stopped, we have no flow of unburnt carbon particles in the air. So answer is both of them.

For final experiments that we should change its diagonal and also its burning fire dimensions.

Results shows our flammable distance around candle has a limit. Actually it could not be relight by distance greater than 25 centimeters in average. It is 10.0 centimeters vertically above for our smaller candles. Limit for angle is 25 degree from vertical line. But has not observed any especial difference to intension of relighting among different angles.

Note our smallest candle mentioned bottom table.

Note we can change burning fire part of candle by changing its thread's length is out.

5. Example of Results

Candle's Diagonal	fire dimensions	maxi dist verti	angle limit
1.0 Cm	1.0 V 0.7 H	10.0 Cm	25 Deg
1.5 Cm	1.5 V 1.1 H	14.0 Cm	25 Deg
1.7 Cm	2.2 V 1.4 H	19.0 Cm	25 Deg
2.0 Cm	3.0 V 1.8 H	25.0 Cm	25Deg

We will face with a round figure around candle above it. It is rely on candle's diagonal length and how much candle's burning thread can produce fire, fire measure while burning is next factor that is related to its thread. And we can gain a maximum with a 2 centimeters diagonal with a burning fire with 3 centimeters vertically and 1.8 centimeters horizontally dimensions.

MATHEMATICS:

Max Dis = (Diagonal + Fire Length) * (Relation Constant)

Relation Constants :

5.00	4.66	4.87	5.00
------	------	------	------

AVG = 4.88 (non unit)

Finally :

Max Distance = (Diagonal + Fire Length) * (4.88)
[General Linear Formula]

**fire width is neglected because it is related to its length, so we can consider one of them.

LIGHT RINGS

Seyed Ali Madani, Muhamad Hassan Muhammadi

ABSTRACT

ARTICLE INFO

Participated in PYPT

Accepted by Ariaian Young Innovative

Minds Institute, AYIMI

http://www.ayimi.org_info@ayimi.org

When an obstacle is put in the path of liquid jet, while jet meets some specifications, standing waves are created upstream of the obstacle. If the contact point of jet and obstacle is illuminated by laser beams, those standing waves act like an optical fiber and keep the light inside the jet. Laser beams after multiple internal reflections inside the jet, create rings of light around the jet. In this paper, first we investigate the phenomena in terms of fluid mechanics, determining the wavelength of standing waves and, as the second part, we examine the rings in terms of optics.

Keywords : Liquid jet, Optical fiber, Fluid mechanics, Rings

1. Introduction

Collision of the jet with an obstacle, cause standing waves upstream of the obstacle. This phenomena can be observed in low velocity jets of household tap. About this phenomena there aren't much papers in relation to an analogue phenomena called capillary waves on fluid cylindrical. The analyses about capillary waves, deal with the instability that cause the cylindrical eventually become droplets. The first person who investigated this phenomena was Rayleigh which dated back to last century. He assumed waves of form $e^{-i(kz-\omega t)}$ on a jet with radius r and velocity u in the direction Z with surface tension σ and density ρ and wave number k , he obtained this equation

$$\omega^2 = \frac{\sigma I_1(kr_0)}{\rho r_0^3 I_0(kr_0)} (kr_0)(k^2 r_0^2 - 1)$$

In most of the papers which are published about standing waves in fluid cylindrical, the base of the analyses is the equation above. In these papers, the effect of viscosity is and also we face with lack of experimental data in this field.

In this article, we first investigate the phenomena without involving viscosity. We determine the effect of different parameters on these waves, which may haven't been investigated in any papers and then, we let the viscosity come in play and investigate standing waves, on highly viscous threads.

2. Theory

In order to analyze what physical effects are causing this phenomena, we should find out the behaviors of a liquid jet. First we examine the shape of a liquid jet.

2.1. The Shape of a Falling Fluid filaments (jet)

We investigate the shape of jets with high Re numbers, which the effects of viscosity on the shape and movement of the jet is negligible. Using Bernoulli's Equation for points A and B, we'll have :

$$\frac{1}{2} \rho v_0^2 + \rho g l + P_A = \frac{1}{2} \rho v^2 + P_B$$

According to Young-Laplace Equation that describes the capillary pressure difference sustained across the interface between two static fluids, due to surface tension, where a

R_1 and R_2 are the radius of local curvature of jet:

$$\Delta p = \sigma \nabla \cdot \mathbf{n} = \sigma \left(\frac{1}{R_1} + \frac{1}{R_2} \right)$$

That we'll get:

$$\nabla \cdot \mathbf{n} = \left(\frac{1}{R_1} + \frac{1}{R_2} \right) \approx \frac{1}{r}$$

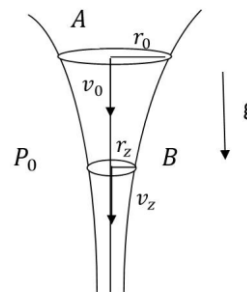


Fig. 1: The fluid cylindrical, accelerating under influence of gravity and surface tension.

Thus, with that simplification, the pressures of jet in points A and B are related to P_0 in this way:

$$P_A = P_0 + \frac{\sigma}{a}$$

$$P_B = P_0 + \frac{\sigma}{r}$$

Substituting into Bernoulli's equation and simplifications:

$$\frac{v_z}{v_0} = \sqrt{1 + \frac{2gr_0z}{v_0^2} + \frac{2\sigma}{\rho v_0^2 r_0} \left(1 - \frac{r_0}{r}\right)}$$

Now, we have the equation for the instantaneous velocity of the jet, we can easily obtain the equation for the radius of the jet using flux conservation:

$$Q = 2\pi \int_0^r v_z r_z dr = \pi r^2 v_z = \pi r_0^2 v_0$$

Hence we'll this equation:

$$\frac{r}{r_0} = \sqrt{\frac{v_0}{v_z}}$$

From this equation we can see that the jet will become narrow as it get more speed under influence of gravity.

2.2. Plateau-Rayleigh Instability

When a cylindrical jet flows in contact with air, there are some perturbations on the surface of the jet. These perturbations are always present and can be generated by numerous sources including vibrations of the fluid container or non-uniformity in the shear stress on the free surface. These disturbances form arbitrary. In fact, when a curve is made in the surface of the thread, because the surface tension acts in such a way to have the minimum interface with the gas phase (in order to reach the minimum potential energy) the surface will push back against any curvature to make the possible smoothest interface (mathematical proof that smooth shapes minimize surface area relies on use of the Euler-Lagrange equation). With the jet being pushed and then pulled back, we have a wave like shape.

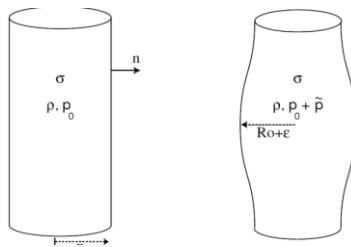


Fig.2: A cylindrical column of initial radius R_0 is shown in Steady State and Perturbed State

The radius of the stream R_1 is smaller, hence according to the young Laplace equation the pressure due to the surface tension is increased. Likewise at the peak the radius of the stream is greater and, by the same reasoning pressure due to the surface tension is reduced. If this was the only effect, we would expect that the higher pressure would squeeze liquid into the lower pressure region in the peak. In this way we see how the wave grows in amplitude over time.

But these two effects, don't cancel each other, as long as the effect of R_2 dominates the effect of R_1 the wave decays over time but in opposite situations, the wave grows over time. It is found that unstable components (that is, components that grow over time) are only those where the product of the wave number with the initial radius is less than unity.

$$kR_0 < 1$$

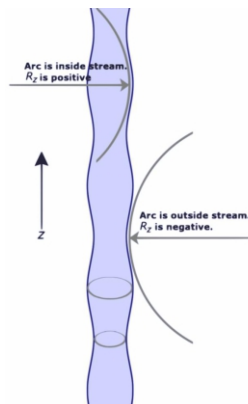


Fig.3: Perturbations along a cylindrical jet

3. Main Explanation

Now, we investigate these waves in presence of an obstacle which is being pushed along the cylinder from one end. That growing wave will be compressed in length. By shifting the frame of reference, obstruction is moving upstream in the shifted frame of reference, that obstruction affects only the disturbed cylindrical surface. The jet itself continues to flow through it. It might be more helpful to say that we are witnessing the foreshortened history of the early, not-fully-developed, waves and again by changing the frame of reference and stand on the jet, those travel up above the obstacle with the same velocity as the jet which is falling in the exact opposite direction. Hence, those waves are stationary are observed like standing waves.

4. Materials and Methods

In our experimental study, we investigate effects of parameters on standing waves and confirm our main explanation due to our experimental results.

By changing the velocity we found that the wavelength of standing waves significantly is affected by velocity of the jet.

Increasing the velocity cause momentum increase. Hence our developing waves are more compressed in high velocity. More the Plateau Rayleigh are compressed, less the wavelength of standing waves will be. So, in high velocities we have standing waves with small wavelengths.

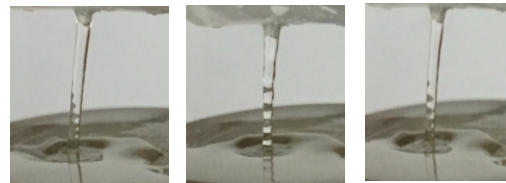


Fig.4: Wavelength of standing waves is a function of jet velocity.

Figure shows different velocities with the same radius

In case of investigating how does radius of the jet affect on standing waves, we canceled the effect of radius on velocity of the jet by experimenting different radiuses under the same velocity. Effect of radius on standing waves is even more than the effect of velocity. Because changing radius except affecting on the wavelength, will increase the velocity which itself affects on waves.

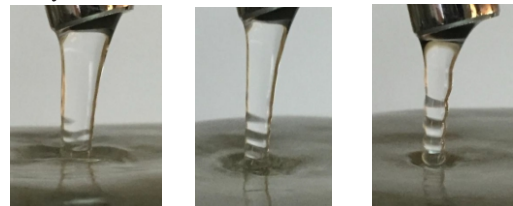


Fig.5: Increasing the initial radius of the jet, causes wavelength of standing waves being decreased

A surprising result is that the wavelength of standing waves is independent of radius in high velocities. The most important parameter which affect on standing waves is surface tension of jet in contact with air. Again in changing the surface tension of the jet, we considered that surface tension will affect on jet velocity. In order to cancel this effect, we experimented different surface tensions under same velocities.

Surface tension is the main reason of this phenomena and is the most effective parameter. Due to our theory, increasing surface tension cause Plateau Rayleigh waves being increased. Hence, wavelength of standing waves are bigger in higher surface tensions of jet. Another surprising

result is that in high velocities, wavelength of standing waves is independent of jet surface tension.



5. Conclusion

Using our experimental results, we found out how wavelength of standing waves changes under different velocities and radiuses of the jet. We also investigated the main parameter, surface tension. We figured out a significant change in wavelength of standing waves by changing the surface tension, which proves our theory that is based on capillary actions. These waves, act as an optical fiber which keeps light inside.

FUTURE WORK

As our future works, first we have plan on investigating this phenomena in presence of viscosity using Navier Stokes equations.

Also, we have plan on experimental study of viscous threads, Using Capillary number to state a limit between capillary actions and viscosity effects which eventually will tell us in what capillary numbers, this phenomena occurs .

References

- [1] K. M. Awati and T. Howes. Stationary waves on cylindrical fluid jets. *Am. J. Phys.* 64, 808(1996)
- [2] T. Massalha and R. M. Digilov. The shape function of a free-falling laminar jet: Making use of Bernoulli's equation. *Am. J. Phys.* 81, 733 (2013)
- [3] S. Senchenko and T. Bohr. Shape and stability of a viscous thread. *Phys. Rev. E* 71, 056301 (2005)
- [4] S. L. Goren and S. Wronski. The shape of low-speed capillary jets of Newtonian liquids. *J. Fluid Mech.* 25, 01, 185-198 (1966)
- [5] liquid jet over a horizontal plane. *J. Fluid Mech.* 20, 03, 481-499 (1964)
- [6] Rayleigh L. XVI. On the instability of a cylinder of viscous liquid under capillary force. *Philos Mag* 1892;34.
- [7] GAVIS, J. 1964 Contribution of surface tension to expansion and contraction of capillary jets. *Phys. Fluids*, 7, 1097.

TRAJECTORY OF A ROLLING OBJECT ON A ROTATING DISC

Fatemeh Akbari

ABSTRACT

ARTICLE INFO

Accepted by Ariaian Young Innovative

Minds Institute , AYIMI

<http://www.ayimi.org> info@ayimi.org

In this paper, we survey on the motion of a rolling object on a turntable exhibiting trajectories without being expelled from the disc like revolving in a stable circular orbit or coming toward the center of the disc that depends on initial conditions and range for observation of a specific trajectory is limited. Based on references frequency of the turntable and rolling friction force are the most important parameters affecting on this phenomenon. According to our experiments both of frequency of the turntable and rolling friction force can effect on velocity and mass center velocity of the rolling object that in some of situations make the rolling object come toward the center.

Keywords: rolling object, rolling friction, frequency of turntable

1. Introduction

When a rolling object (sphere, disc, ring,...) is put on a horizontal rotating disc although we predict that the rolling object will be cast away from the turntable (because of the Centrifugal force), interesting trajectories will be observed while the rolling object is bearing on turntable without being expelled from it like charged particles absorbing in an electric field .Frequency of the turntable and rolling friction force are the most important parameters affecting on the trajectory of the rolling object. We need to know about rolling motion for our investigation. If an object rolls without slipping, then the bottom of the rolling object must be momentarily at rest. Rolling without slipping can be thought of as the motion of the center of mass plus rotational motion about its center of mass.

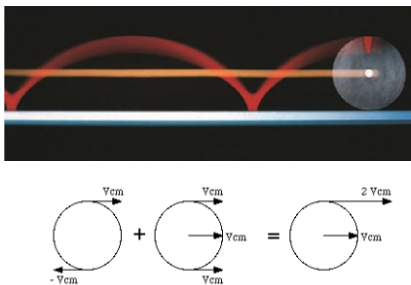


Fig. 1: Rolling motion of a rolling object

As shown in figure (1) when a rolling object has rolling motion it rotates about the point of contact with the ground.

Rolling friction is the resistive force that slows down the motion of a rolling ball or wheel. This type of friction is typically a combination of several friction forces at the point of contact between the wheel and the ground or other surface (Fig

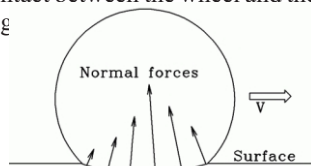


Fig. 2: Several friction forces

Amount of rolling friction is calculated by following

equation:

$$F_r = u_r W$$

Where, F_r is the resistive force of rolling frictional force, u_r is a constant, called the coefficient of rolling friction for the given surfaces of contact-which is dependent on elasticity and deformation amount of the surface- and W is the entire weight of the rolling object including the rolling mechanism.

In this problem rolling friction force plays a major role so discussion about effect of rolling friction is essential to investigate trajectories of spheres and rings on a rotating disc.

We investigated behaviors of spheres and rings (or discs) on the rotating disc separately.

2. Methodology

During our investigation we found articles which dealt with this problem using force, torque and angular motion equations and imaginary methods to make the problem understanding simpler. But our main way to solve the problem was experimental method. We produced a horizontal rotating disc and observed different types of trajectories for spheres and ring recording the rolling object motion by digital high speed camera. We get our experimental data using "Tracker" software (Fig. 3).



Fig. 3: Experimental setup

3. First Attempt: Different Observed Types of Motion for Spheres

We can easily observe these types of trajectories doing simple experiments through a turntable and a sphere.

1. The ball's center of mass goes in a curved path and expels from disc (Fig. 4a).

- The ball's center of mass runs on the disc and additionally exhibits loops. (Fig. 4b)
- The ball's center of mass turns in a stable circular orbit that depends on the frequency of the rotating disc. (Fig. 4c)
- The ball's center of mass is at rest and has no motion.



Fig. 4: (a) The ball expells from disc. (b) The ball makes loops (c) The ball runs on a circular orbit



Fig. 5: The ball is being expelled from the disc

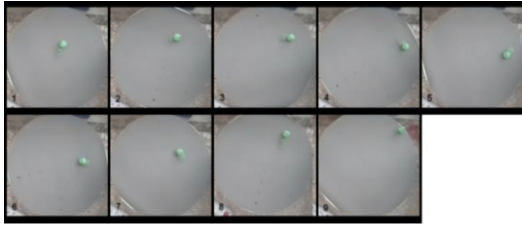


Fig. 6: The ball makes loops

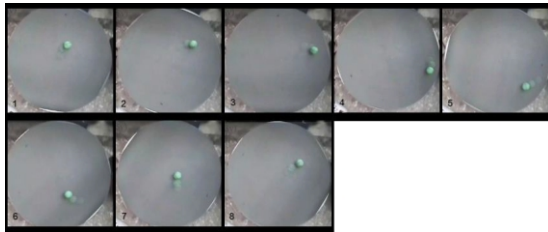


Fig.7:The ball turns in a circular orbit

4. Analyze of Trajectory of Spheres

Here r , R , ω and Ω are the sphere radius, the radial distance of the sphere from disc center, angular velocity of the sphere and angular velocity of the turntable respectively.

1. In this situation the linear velocity of the turntable is much more than the surface velocity of the sphere:

$$\omega \times r = v + \Omega \times R$$

2. friction force makes the ball roll on rotating disc and the ball has angular velocity perpendicular to the velocity of the disc and it keeps its rolling direction while the direction of the velocity of the rotating disc keeps changing but the disc can't change the rolling direction of ball (because of the angular inertia of the ball) so ball's contact point runs on the disc-we have sliding motion additionally-as a result the ball get closer to the disc but the surface velocity of the ball is less than the linear velocity of the turntable ($\omega \times r = v + \Omega \times R$) so the ball gets to be expelled from the disc but friction makes ball's surface velocity increase and the ball repeat the trajectory back to back.

3. The ball keeps its velocity (because of its angular inertia) while it's coming toward the center so when it gets closer to the center its surface velocity is more than the

linear velocity of the turntable at the point of contact. As a result it moves in opposite direction with its last movement and makes a circular orbit.

According to our experiments: $\omega_0 = (2.7) \omega_d$

Where ω_0 is the frequency of the circular orbit and ω_d is the frequency of the rotating disc.

4. To keep sphere's center of mass at rest (have no velocity relative to outward coordinate system) its surface velocity must be equal to turntable velocity:

$$r \omega = R \times \Omega$$

V. Second attempt: motion of rings

There is no complete written theory for the trajectory of rings and discs in references so we started an investigation to analyze motion of them.

Rings and balls have various propinquities but rings because of the fulcrum have restriction against rolling with some of directions so the rotation of the turntable effects on the ring differently and makes it rotate around its diameter and with direction perpendicular to the turntable surface.

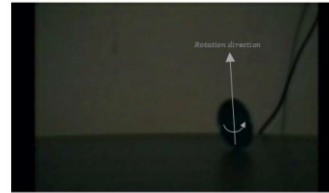


Fig. 8: There is rotation around the diameter of rings and changing mass center velocity direction during motion of rings

Discs and rings show approximately the same interesting trajectories but inertia and angular inertia are actually important which is different for rings and discs. In figures (9) and (10) you can see the trajectory of a ring on the turntable.

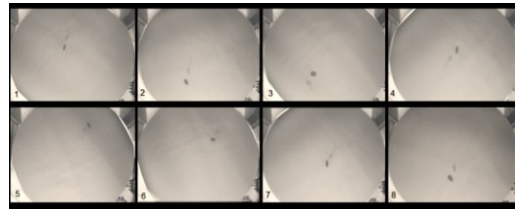


Fig. 9: Trajectory of a ring on rotating disc

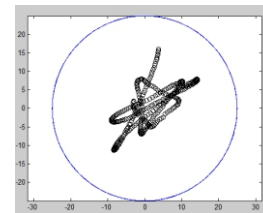


Fig.10: Trajectory of a ring on the turntable

5. Result

In figure (8) you can see the different trajectories of the ball on the turntable. We changed initial conditions and achieved table (1).
























As shown by figure (8) the trajectory of the ball is dependent on initial conditions and the range of observation for a trajectory is limited to specific initial situation.

6. Conclusion

A sphere or a ring (or other type of rolling object) can bear on a rotating disc without being expelled from the disc exhibiting different types of trajectories that depends on

initial conditions like frequency of the turntable and radial position of the rolling object and ratio of initial velocity of the rolling object into the velocity of the rotating disc and the range of observation for a trajectory is limited to specific initial situation. Type of friction affecting on the rolling object is different for different situations. (For example rolling friction for rolling motion and both of rolling friction and sliding friction for motion of a rolling object with sliding motion additionally).

Table 1: observed trajectories during experiments in different initial conditions

$\omega \left(\frac{R}{\tau} \right) / r (cm)$	0	5	10	15	20
6.5					
10.2					
13					
13.5					
<div> This ball is being expelled from the</div> <div> The ball makes loops</div> <div> The ball turns in a circular orbit</div>					

References

[1] Bums, "Ball rolling on a turntable: Analog for charged particle dynamics," Am. J. Phys. 49, 56-58 (1981).

[2] Klaus Weltner, Stable circular orbits of freely moving balls on rotating discs, Published by the American Association of Physics Teachers, (1997).

[3] Artjom V. Sokirko, Alexandr A. Belopolskiib) and Andrei V. Matytsyn, Dmitri A. Kossakowski, Behavior of a ball on the surface of a rotating disk, (1993).

[4] Héctor A. Múnica, A ball rolling on a freely spinning turntable: Insights from a solution in polar coordinates, International Center for Physics,(2010)

ACOUSTIC LENS

Nooshin rajabi, Maryam Maghsoodi

ABSTRACT

ARTICLE INFO

Accepted by Ariaian Young Innovative

Minds Institute , AYIMI

http://www.ayimi.org_info@ayimi.org

Fresnel plate consists of radially symmetric zones. Zones alternate between opaque and transparent, and are spaced so that wave transmitted by the transparent zones constructively interferes at the desired focus. Modeling and experimental results of a flat lens for use in air are presented and the optimized design parameters are used to fabricate the lens. The theoretical calculation for the focal length is determined to be 20.0 cm and the incident wave length of 3500 Hz. The results show a sharp focal spot with very high amplitude.

Keywords: *Acoustic Lens, Sound Waves, Focal Point, Diffraction, Interference*

1. Introduction

Acoustic Fresnel lenses have a great application in acoustic microscopy and different category. They have emerged as an alternative to the conventional due to ease of fabrication even with the low efficiency of 40% of input waves[2]. Different from usual lenses, Fresnel lenses use diffraction mechanism to redirect waves at the desire focus.

Fresnel lenses with concentric rings are widely used in optical applications, however a similar principle can be used to focus acoustic waves. Designing and producing an acoustic lens and investigating its properties, such as amplification, and its dependence to relevant parameters is the main goal of this paper. Many methods have been studied to focus sound waves such as using Fresnel binary lens consist of alternating transmitting and opaque rings as a scattering elements. Due to diffraction and interference theory zone plates can be able to focus the sound waves because of their wave behavior. Other way that has been used to focus sound waves was using a regular array of cylinders. These cylinders also work by diffraction and interference theory too. In these two methods that we talked about the goal was to make constructive interference of waves and also try to make it in one point rather than many of them, then more sound pressure can be detected. These two methods are good for high frequencies of sound, because in low frequencies a big structure is needed; And the solutions was just for plane sound waves.

Some different mechanisms to achieve sound collimating have also been explored. Like using negative refraction in metamaterials that is because of different refractive indexes then it may be possible to focus acoustic waves.

In this paper we investigated the effect of relevant parameters on an acoustic lens amplification and introduce some methods to design it with the best quality. Also make it appropriate for low frequencies of sound and see the effect of spherical source.

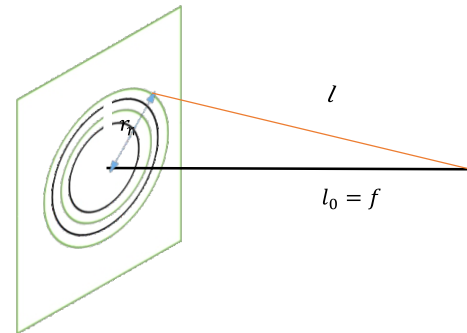
2. Methodology

Our method for an appropriate design of the lens was using COMSOL software for simulations and numerical solution to reach a good design that can make constructive interference on lens's axis. Except previous researches our numerical solution has been done for spherical wave front which is more close to reality. Effect of each parameter and

boundary condition has been considered in our simulations. Another reason to use simulation is that number of possible designs that can focus sound waves is not limited, but we wanted to find optimum of them. After that making experiment's setup to check our results from simulations and compare with experimental data because finding the effect of each parameters and then finding the appropriate one by experiments was hard and waste our time.

3. Theory

a) Basic calculations :



By writing a simple Pythagorean relation, diameters can be calculated.

$$f^2 + r_n^2 = l^2$$

$$\text{As we now.} \quad l - l_0 = \frac{n\lambda}{2}$$

$$\text{so} \quad f^2 + r_n^2 = \left(f + \frac{n\lambda}{2}\right)^2$$

$$r_n^2 = n\lambda f + \frac{n^2\lambda^2}{4}$$

The term $\frac{n^2\lambda^2}{4}$ represent spherical aberration .

b) Fresnel geometry

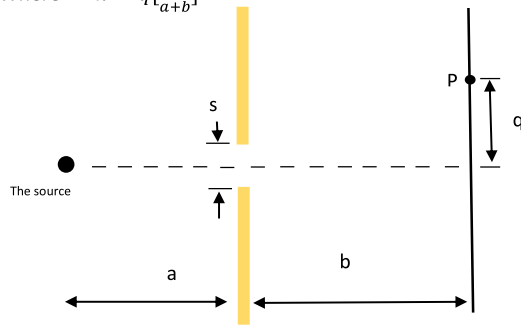
To calculate the intensity at point P, the geometry is setup in terms of the parameter v which is used with the Cornu's spiral.

$$v = v_1 - v_2$$

$$v_2 = \left[\frac{s}{2} + k\right] \sqrt{\frac{2(a+b)}{ab\lambda}}$$

$$v_2 = \left[\frac{-s}{2} + k \right] \sqrt{\frac{2(a+b)}{ab\lambda}}$$

$$\text{Where } k = q \left[\frac{a}{a+b} \right]$$



These equations would be useful in the days before computer programs like "cool edit" -that has been used in the experiment- but today one can compute the intensity of different points.

When a set of incident waves strike the lens, the obstacle is not a simple geometric shadow, it is a diffraction pattern. When the source wave is not distant and the incident waves are not plane, the Fresnel diffraction pattern can be observed and its theory is, unsurprisingly, a little more difficult than the theory for Fraunhofer diffraction.

4. Experiment

Here we explain 2 different symmetry designs.

4.1. First model

To clarify one of the techniques consider an array of nonoptimized circles in x-y plane with the axial symmetry x (Fig. 1a). These circles by transition from 2D to 3D by extruding them along z axis can make a 3D acoustic lens consist of cylinders as a scattering elements capable of focusing sound in a line parallel to the extrusion direction. The acoustic waves impinges the structure from the left. We considered PML (perfectly matched layer) for boundary conditions to transmit the sound perfectly. The results of simulation show us sound pressure in all point toward the structure. Some pair of the cylinders have been discarded to optimize the design because they make a destructive interference in our focal point (Fig. 1b). So we discarded some of them. By Changing the position and radius of cylinders and see the results we tried to find the appropriate design.

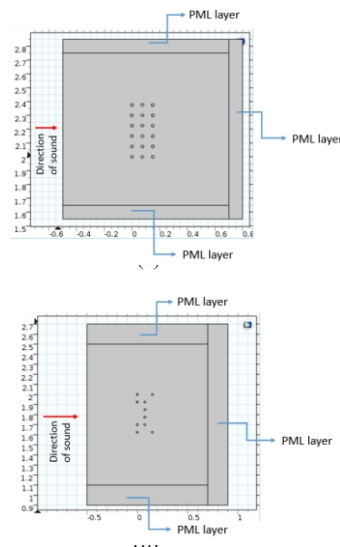


Fig 1: a) Structure of simulation with nine pair of cylinders. b) some pairs of cylinders have been discarded

Absorption, transition and reflection of cylinders can also effect on sound pressure in focal points. These three properties are related to the material used for make cylinders. To consider effect of these three we must choose something which is more close to reality. The material with sound velocity of 1040 m/s and density of 4.1 kg/m^3 are chosen as the material of cylinders. About the effect of sound frequency, if one setup be good for one frequency it also can focus sound for other frequencies but with a small change in lens dimensions. Thus simulations done with same frequency and after finding one appropriate design, the design examined by various frequencies then the best frequency for maximum sound amplitude found.

4.2. Second model (Fresnel zone plate)

Simulation

Fresnel binary lens consist of concentric rings is the second method to focus sound wave, that we explain this method here. Using Fresnel lens formula ($r_n = \sqrt{nf\lambda}$) that gives the radius of nth rings for determined focal length. λ is the wavelength of sound. Then the 2D simulation done using axisymmetrical method. The boundary conditions were PML too. Sound emits the structure from bottom. Then the results of our simulations gave us the appropriate setup to focus sound waves. The material used for rings was same as the material of cylinders. And also the same frequency. Here like before if one design can be good for one frequency it also can be useful for other frequencies but with some changes in dimensions. Here the relation to change dimensions is $r_n = \sqrt{nf\lambda}$ (Fig. 2).

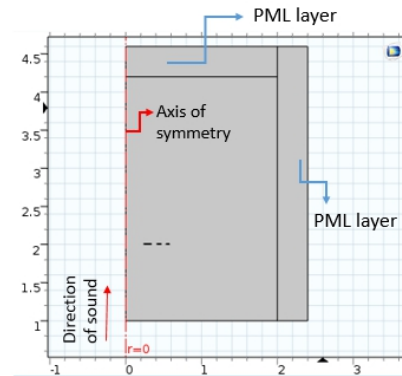


Fig 2: Second model

5. Numerical Solution

Calculations have been done for Fresnel zone plate to find out sound amplitude in each arbitrary point (x_1, y_1). The sound source is assumed spherical so the path length difference has been calculated before emitting the structure and after it to the point (x_1, y_1) (Fig. 3). This figure shows a 2 dimensional Fresnel zone. Blue lines on x axis shows rings. The width of the rings decreases by increasing distance from the central point $O(x_0, y_0)$. The space between $-r_1$ and r_1 didn't assumed opaque to transmit the sound. To find out the amplitude of the wave traveling along m_1-l_1 path (or others) and reaches to the point p, we need to know the remainder of division of l_1+m_1/λ (here we called that $\text{mod}(l_1+m_1, \lambda)$). The amplitude is given by the equation:

$$A = \sin(\text{mod}(l_1+m_1, \lambda)/2\pi)$$

This amplitude A, is the amplitude without considering the effect of distance from the source point to the point p that can make the intensity less. To solve this problem we considered I as the initial intensity of sound. So the real intensity at the point p can be found by:

$$A = [\sin(\text{mod}(l_1+m_1, \lambda)/2\pi)]/4\pi r^2$$

we divided the intensity to $4\pi r^2$ that is the surface of a sphere sound traveled to consider the effect of traveled distance on total amplitude.

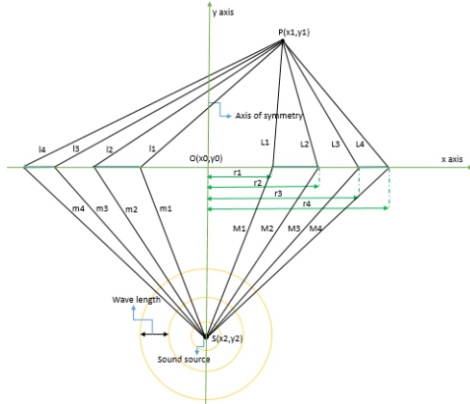


Fig. 3 : 2D scheme of Fresnel zone plate by a spherical sound source P is any arbitrary point and the black lines from source to the point p show the path difference. The rn introduce the radius of nth ring

6. Results of These Two Models

1.First model results

The final design that we reached was the design shown in (Fig. 4). An array of cylinders with outside radius 1.59 cm and inside radius of 1.41 cm and the material in which the sound speed is 1040 m/s and the density is 4.1 kg/m^3 .

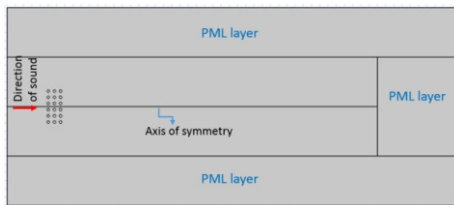


Fig. 4: The final design that was appropriate for our goal

This structure examined for various frequencies from 1500 Hz to 3000 Hz by the step of 20 Hz. The results was appropriate for the frequencies 1980 Hz, 2000 Hz, 2260 Hz and 2900 Hz (Fig.5). This figure shows the acoustic pressure in all points. The sound wave has been approximately focused in front of the structure.

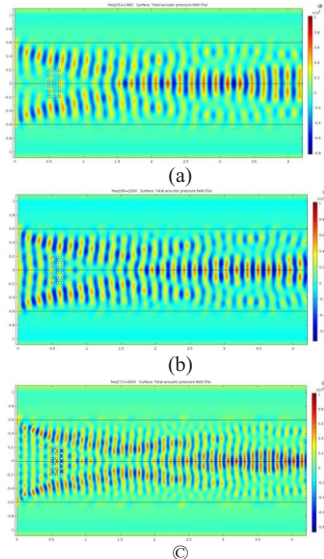


Fig. 5: Results of acoustic pressure for frequency a) 1980 Hz b) f=2260 Hz c) f=2900 Hz. The red parts have the most acoustic pressure

The results for these 3 frequencies for the sound pressure which human can hear is shown in (Fig.6).

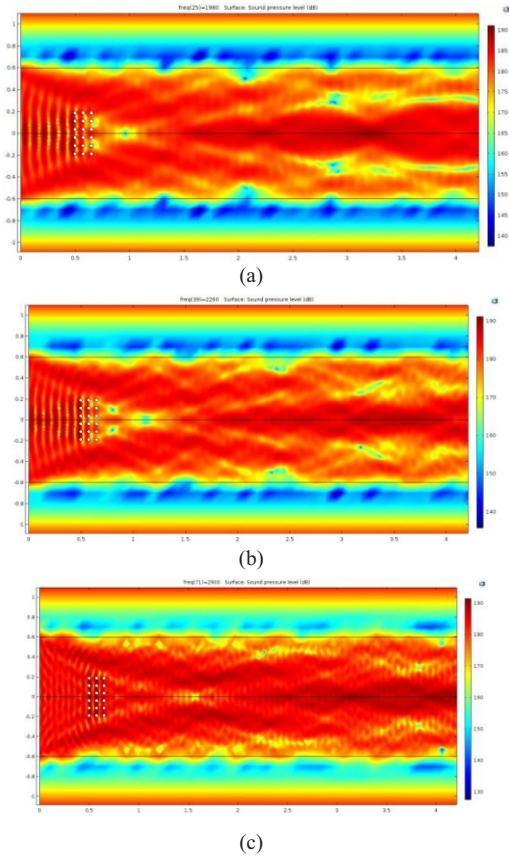


Fig. 6: The results of sound pressure in all points towards the structure for the frequencies a)1980 Hz b)2260 Hz c)2900 Hz

The maximum and minimum sound pressure place changes by sweeping on frequencies (Fig. 7).

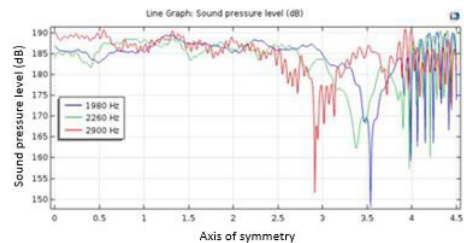


Fig.7: Comparing sound pressure for 3 frequencies. Red one is frequency of 2900 Hz, green one frequency 2260 Hz and the blue one for the frequency of 1980 Hz.

2. Second model results

The 2D design of Fresnel zone plate is shown below (Fig.8). The diameter of rings considered 0.002 m. And the material used for rings was the same as the material used for cylinders before. (Sound speed=1040 m/s and density of 4.1 kg/m^3).

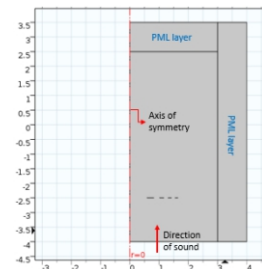


Fig. 8: 2D appropriate design of Fresnel zone

This design examined for various frequencies. From 2500 Hz to 3000 Hz by the step of 50 Hz and the maximum sound pressure measured in each simulation. The peak sound pressure for 2650 Hz had the best result (Fig. 9).

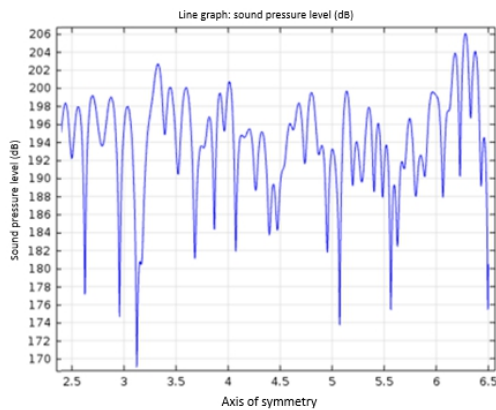


Fig. 9: Sound pressure on each point on the axis of symmetry of the design. The maximum sound pressure is 206.115 dB at the distance 3.75 m in front of the structure

7.A Handmade Lens

The lens consists of Styrofoam with radially symmetric zones. A signal generator with specific frequency and amplifier connected to speaker. In order to find the experimental focal point, placing the microphone in the different location is needed. By analyzing and comparing the intensity of the different focal points, the sharpest focal point with very high amplitude can be observed (Fig. 10).



Fig. 10: Handmade lens

The microphone had been recorded the sound and with "cool edit pro" the intensity can be calculated (table 1).

Table 1: Intensity by the lens

X(cm)	Y(cm)	Intensity(dB)
3.5	21.5	-25.49
3.5	35.0	-25.66
-6.5	32.5	-27.95
*0.5	39.0	-20.96
-3.5	35.0	-26.44
6.0	30.0	-30.12

x=the horizontally distance of microphone from the center of the lens; y=the vertically distance of microphone from the center of the lens. *the sharpest intensity among the measurements.

Table 2: Figure (2.5) Different amplitudes for the sharpest focal point (0.5, 39.0) lead to different intensities

Intensity(dB)	Amplitude
-25.30	3
-23.94	4
-20.96	5
-18.63	6

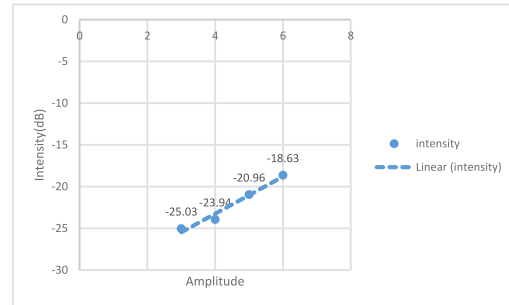


Fig. 11: By increasing the amplitude the intensity of the main focal points increased

Table 2: Intensity A is when the lens is set to the setup and Intensity B is the Intensity without lens and the intensity Gain is portion of intensity A to intensity B.as it can be observed the lens is amplifying the amplitude

amplitude	Intensity A(dB)	Intensity B (dB)	Intensity Gain
1	-34.88	-31.21	1.117591
2	-31.78	-28.44	1.11744
3	-25.03	-22.33	1.120914
4	-23.94	-21.3	1.123944
5	-20.96	-18.55	1.129919
6	-18.63	-16.38	1.137363

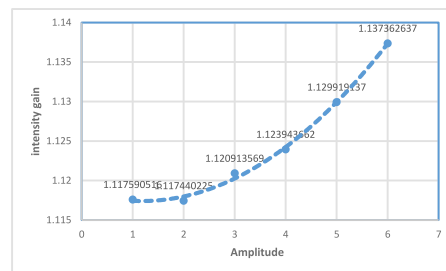


Fig. 12: By increasing the amplitude the intensity gain is increasing slightly

7. Conclusion

In this paper we talked about the methods already used to focus sound wave and their weaknesses and we tried to introduce the design that can focus sound. COMSOL software used to discover a lens capable focusing sound. The effect of relevant parameters that can effect on amplification of the lens investigated and also boundary conditions considered. So some designs introduced. An array of cylinders is able to focus waves in appropriate conditions.

Discarding some pairs of cylinders avoided destructive interference at the focal point , so we reached to that condition. The final system examined by many frequencies and the frequencies that could focus sound rather that other founded. Fresnel zone plate can also be helpful to focus sound. For a determined focal length we calculated the radius of rings then simulate them. Sweeping on frequencies gave us the frequency that has a maximum peak. These two designs can made and use to focus sound waves.

Also We have done the experiment with a handmade Styrofoam lens which has a low efficiency because of errors of fabricating, thus the theoretical calculation for the main focal point was different from the experimental focal point. The experiment shows that by increasing the amplitude the intensity of the focal points would be increased also the intensity gain is calculate and the result shown the amplification of the lens. The Fresnel lenses use the diffractive properties to focus wave which can be

explained with Fraunhofer diffraction theory.

References

- [1] G.T. Clement I, H. Nomura and T. Kamakura Ultrasound field measurement using a binary lens
- [2] Lorenzo Sanchis, Andrés Yáñez, Pedro L. Galindo, Joaquín Pizarro and Juan Martínez Pastor Three-dimensional acoustic lenses with axial symmetry
- [3] the focusing properties of an acoustic thin lens and zone plate W. J. Hughes, J. R. Craig
- [4] Jenkins, F.; White, H. (1976) Fundamentals of Optics (4th ed.) McGraw-Hill
- [5] Chulmin Joo, Image Grating Metrology Using a Fresnel Zone Plate.
- [6] Shiu C. Chan, Mani Mina, S.S. Udpa, W. Lord, L. Udpa and T. Xue , FINITE ELEMENT MODELING OF BINARY ACOUSTIC FRESNEL LENSES.
- [7] <http://hyperphysics.phy-astr.gsu.edu/hbase/phyopt/fraunhofcon.html#c1>
- [8] B. Hadimioglu, E.G. Rawson, R. Lujan. M. Lim, J. C. Zesch,

NATURAL TIMING DEVICES AS BIOLOGICAL CLOCK IN LIVING ORGANISMS

Seyed Parsa Saadatjoo. Andishe Farda High School, Mashhad, parsasaadatjoo86@gmail.com

ABSTRACT

Biological clocks are natural timing devices in living organisms such as plants, animals, humans, microbes and many others. They mostly work throughout the day-cycle and react based on the light they receive. Most daily activities are seen in the Circadian rhythms which are 24-hour cycles, but we can see behaviors in other cycles as well, such as Circalunar rhythms which are monthly activities, or the Circannual rhythms which are yearly cycles; we can see behaviors like seed germination, flowering and leaf fall in plants in the Circannual rhythms.

Key Words : *Biological Clock, Living Organisms, Circadian Rhythms*

ARTICLE INFO

Encouragement medalist in BUCAIMSEF 2022

Advisor: Ali Qaraee Najafabadi

Accepted by Ariaian Young Innovative

Minds Institute , AYIMI

<http://www.ayimi.org>, info@ayimi.org

1. Introduction

Biological clocks are natural timing devices that are organized by the day-cycle. They are spread throughout all our body and interact with several kinds of cells.

Biological clocks are fundamental to the functioning of life and to the organization and coordination of behavior. Simple behavioral functions, such as timing active and inactive periods during the day/night cycle to maximize productivity and minimize risk rely on internal clock functions.

The main secretion point of Melatonin is a part of the brain called the SCN inside the hypothalamus.

Circadian Rhythms are physical, mental, and behavioral changes that follow a 24-Hour cycle that primarily react to light and darkness and affect lots of living organisms like people, plants, microbes and animals.

Biological clocks in birds are critical components of their physiology and behavior. However, as the properties of the pineal gland's function became clearer and the identification of new pacemakers in the hypothalamus and retinae made the system appear more complex.

Being a derivative of serotonin, melatonin is one of the main hormones affecting many species throughout the day-cycle.

2. Method

Examples of timing processes in living organisms are plants opening their flowers at particular times of the day or sleep-wake cycles in humans. To Propose a problem concerning rhythms and timing in the species we have examined in both plants and animals (Fig. 1).

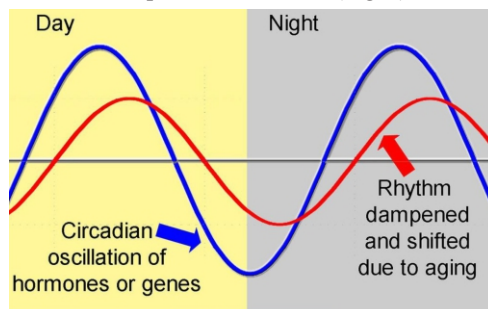


Fig. 1: Circadian Rhythms

2.1 Circadian Rhythms in Plants

Because the function of a biological clocks is to anticipate environmental changes they tend to be set to environmental rhythms such as daily, tidal and seasonal changes. While, the behavior or response itself is mediated by the endogenous (internal) biological clock, the clock is set to these exogenous (external) environmental cycles. As a result the following are commonly observed periods for biological rhythms:

Circadian –daily activity (~24hrs) E.g. Sleep movements, the opening and closing of flowers and solar tracking

Circatidal –tidal activity period (~12.4hrs)

Circalunar –monthly activity period (~29days)

Circannual –Yearly activity period (~365 days) Seed germination, flowering, and leaf fall

3. Experiments

3.1. Comparing Leaves in Plants

Plant A: 6 hours of light and 6 hours of darkness

Plant B: 12 hours of light and 12 hours of darkness

*Both watered at the same time

*Both with the same conditions (Fig. 2)

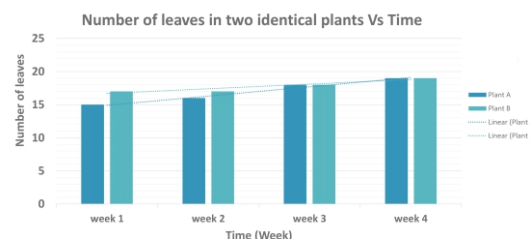


Fig. 2: Two identical plants

Number of leaves in this two identical plants are compared in different times (Fig. 3).

3.2. Comparing Stems in Plants

Plant A: 6 hours of light and 6 hours of darkness

Plant B: 12 hours of light and 12 hours of darkness

*Both watered at the same time

*Both with the same conditions (Fig. 4)

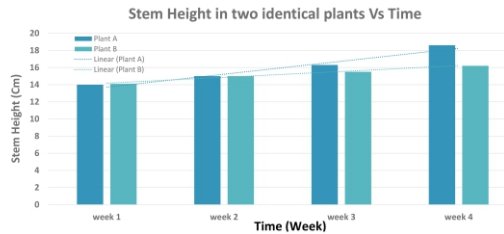


Fig. 4: Stem height vs time

3.3. Comparing Flowers in Plants

Plant A: 6 hours of light and 6 hours of darkness

Plant B: 12 hours of light and 12 hours of darkness

*Both watered at the same time

*Both with the same conditions (Fig. 5)

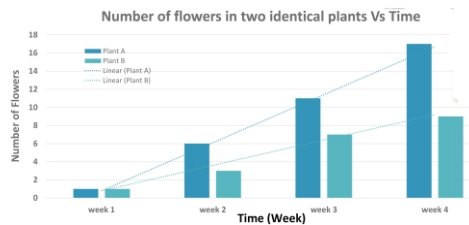


Fig. 5: Number of flowers vs time

3.4. Comparing the Amount of Light in Plants

Some of the plants open and close their flowers according to the changes in the amount of light during the day and night. Chinese rose flower was used in this experiment (Fig. 6).



Fig. 6: Changes in plants in front of light and darkness

3.5. Comparing the Roots in Plants

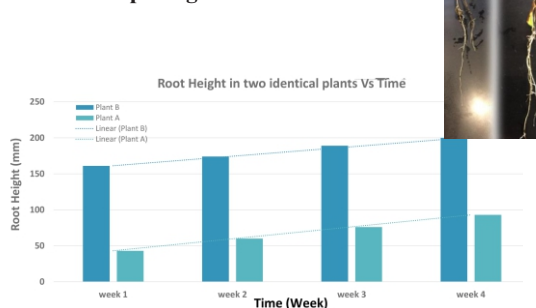


Fig. 7: Root's height vs time

3.6. Comparing Biological Clock in Animals

Chicken A: 12 hours day- cycles

Chicken B: 24 hours day- cycles

*Both chickens were fed 40 gr a day

*Both chickens grew in the same conditions (Figs. 8 and 9)

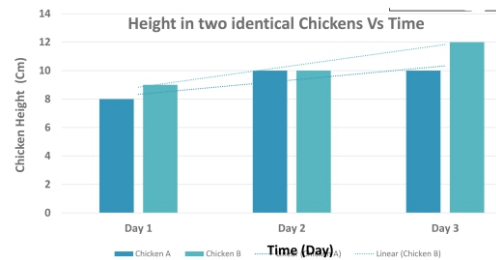


Fig. 8: Height in two identical chickens vs time

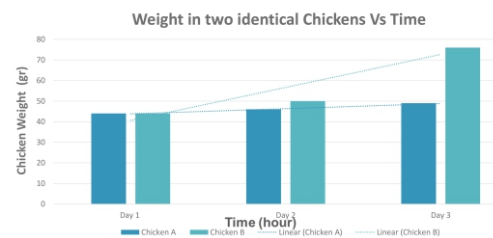


Fig. 9: Weight in two identical chickens vs time

4. Results

Comparison in plants resulted in (Figs. 10-12):



Fig. 10: Growing the stem and increasing the number of leaves in plants



Fig. 11: Increasing the number of flowers in plants



Fig. 12: Growing the roots and increasing its height in plants

Results in animals:

Increasing the weight and height of chickens (Figs. 13 and 14).



Fig. 13: 12 Hour day-cycles
49 gr

24 Hour day-cycles
76 gr

5. Conclusion

In our study we found:

- Circadian rhythms can affect the growth and development of living organisms, both in plants and animals.
- In the study related to plants, the reduction of the circadian rhythm to half of the normal state resulted in an increase in the number of leaves, flowers, and an increase in the length of the roots and stems.
- In the chicken study that was conducted over three days, the chicken with the shorter circadian rhythm was removed from the experiment after three days due to weakness and inability to treat and help him recover. We think the reason why chicks are weaker with a shorter circadian rhythm is jet lag.
- The chicken with a longer circadian rhythm showed more growth and development in the same and equal period of time by receiving sufficient and equal amount of water and food compared to the chicken with a shorter circadian rhythm.

References

- [1] Michael D. Breed, in Conceptual Breakthroughs in Ethology and Animal Behavior, 2017
- [2] Vincent M. Cassone, Vinod Kumar, in Sturkie's Avian Physiology (Sixth Edition), 2015
- [3] <https://www.pathwayz.org/Tree/Plain/BIOLOGICAL+CLOCKS+-PLANTS>

COOLING JUG

Haleh Forouzesh, Maryam Rostami, Hanieh Mohammadi

ABSTRACT

ARTICLE INFO

Participated in IPT/IRPT 2016

Accepted by Ariaian Young Innovative

Minds Institute , AYIMI

http://www.ayimi.org_info@ayimi.org

In the old days, a clay pot cooler (also called a zeer or pot-in-pot cooler) was often used for keeping foodstuffs fresh in very hot and dry areas. Water was used to cool the inner pot as it flowed through a porous surface (such as sand) and subsequently evaporated. What is the minimum temperature that can be achieved using such a device and what does this minimum temperature depend upon? Explain what determines the rate of cooling?

Keywords: Zeer Pot, Refrigerator, Moisture, Thermal mass

1. Introduction

In zeer pot, water evaporates through sand which has filled the gap between the inner pot and the outer pot, out of the outer pot. The water serves as refrigerant. The sand is considered as a thermal mass and helps moisture up the wall of outer pot's surface.

The zeer pot will work better under direct sunlight because it will transfer a significant amount of energy to the system.

2. Theory

2.1 Relative Humidity

The water that is moving among sands, will evaporate much better in environment with low humidity in comparison to the high one. Because relative humidity is a measure that shows how much water can be held in the air. So if we put cooling jug in a low humidity place, the water will evaporate faster so the jug will be cooler faster and the temperature reduce more than when we put it in a high one (Fig. 1).

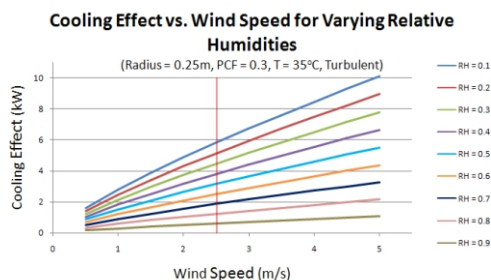


Fig. 1:(Cooling Effect vs. Wind Speed for varying Relative Humidity Levels (Device Radius = 0.25m, Permeability Correction Factor = 0.3, Ambient Temperature = 35 degrees Celsius, Turbulent Flow)

2.2. Permeability

Evaporate occurs through the outer pot, so the type of clay that pot has made out of is very important because of the "permeability". It is better that clay be permeable and porous so water can evaporate through it more easily, because water must keep going through the sand to replace the moisture that has evaporated and passed out through the outer clay. So the important measures here are diffusion rate

and the permeability of the clay. The best type of clay that we can use is Earthenware (Fig. 2).

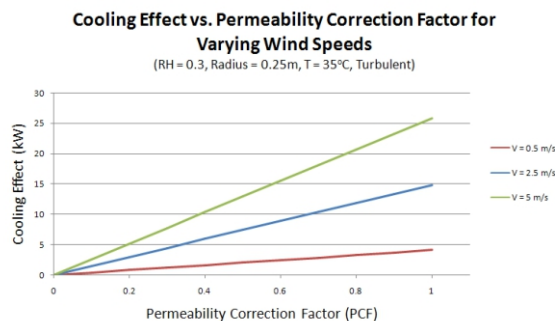


Fig. 2: (Cooling Effect vs. Permeability Correction Factor for varying Wind Speeds (Device Radius = 0.25m, Ambient Temperature = 35 degrees Celsius, Relative Humidity = 0.3

2.3. Area available for Evaporation

The pot surface area that evaporation occurs through it approximately calculated as:

Total Area = Surface Area of Spherical Portion of Outer Pot

+ Surface Area of Cylindrical Portion of Outer Pot

+ Surface Area of Exposed Sand in between Pots

The radius of the outer pot has been selected to vary the area available for evaporation (Fig. 3).

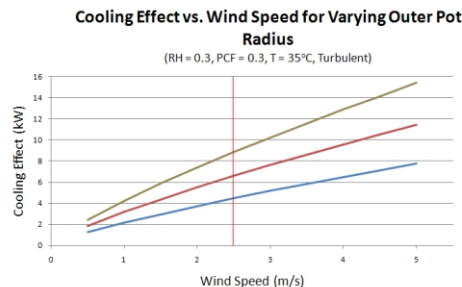


Fig. 3: (Cooling Effect vs. Wind Speed for varying Device Radii (Permeability Correction Factor = 0.3, Relative Humidity = 0.3, Ambient Temperature = 35 degrees Celsius, Turbulent Flow)).

So by increasing the area surface, the evaporation increases and according to that, the cooling effect increases too.

3. Conclusion

So if we put the pot-in-pot that is made out of earthenware with a good permeability in an area with low relative humidity and high velocity of wind and put it the way that the area available for evaporation exposes as much as possible, the device will work ideal. And the minimum temperature will reach by using these conditions and by using the temperature reader, we can determine the temperature and the minimum temperature that is reached is 4F.

SIREN

^{a)}Reza Niamanesh, ^{b)}Nita Jafarzadeh

a) rniamanesh@gmail.com, b) nita1385@gmail.com

ABSTRACT

ARTICLE INFO

Participated in IYPT 2023

Accepted by Ariaian Young Innovative

Minds Institute, AYIMI

http://www.ayimi.org_info@ayimi.org

The problem states if you direct an air flow onto a rotating disk with holes, a sound may be heard. Explain this phenomenon and investigate, how the sound characteristics depend on the relevant parameters. In this research several experiments by different discs are investigated and the data are collected from the recorded sounds.

Keywords: Siren, Disc, Recorded Sound

1. Introduction

When we direct an air flow through the hole on the disk, we hear a sound which's a non-periodic wave (Fig. 1). The changes of Amplitude by time are shown on this chart for a disk with 12 holes on it.

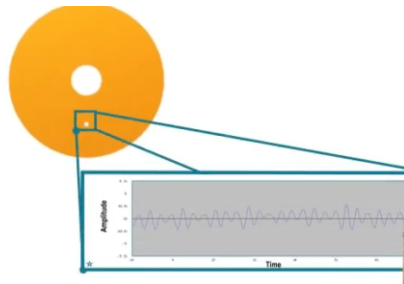


Fig.1: The amplitude of the sound hearing from the disk (Schematic)

The reason behind this phenomenon is the pressure difference that's created. In other words the spinning disk with holes is creating the frequency that we want (Fig. 2). The hole lets the air flow through it and then blocks it periodically and we can control this frequency by changing parameters, that is explained in experiment part.

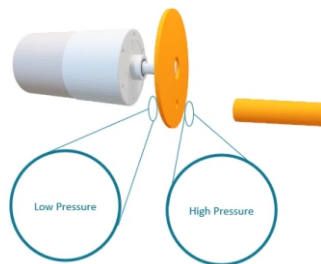


Fig.2: Pressure difference in this phenomenon

By investigating this pressure difference, we realize that pressure difference is versed and what explains is, the Bernoulli principle.

The pressure on the rotating disk and the sound on it is compared with a speaker (Fig. 3).

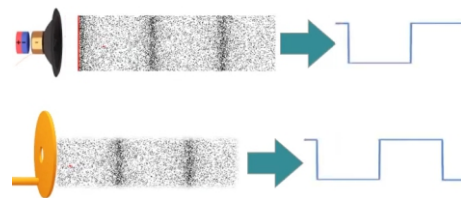


Fig.3: Disk and speaker comparison

Due to the air particles compression, we understood that these two sounds have a similar pattern and so, we can say that they have the same characteristics.

2. Theory

One of the main parameters is frequency. Our theory states: that the frequency is equal to the "number of the holes that are from the same distance around the center" times RPS (Fig. 4).

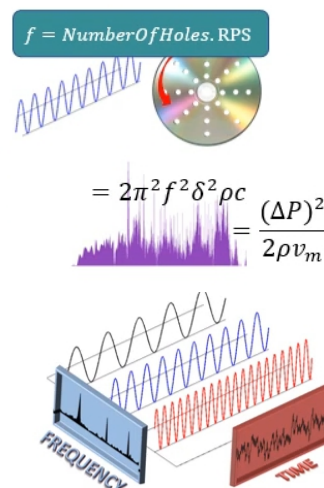


Fig. 4: Frequency vs Time

The next main parameter is the sound intensity and the last parameter is duration that in our situation and experiments is the same so it is not investigated.

To analyze the hearing sound , we need something that can divide the sound into individual frequency components so that we can recognize the siren's frequency and analyze it which is the Fourier series. By using the Fourier series, we can define any function as a sum of sine and cosine functions and by writing this we can recognize the frequency of the siren through intensity (Fig. 5).

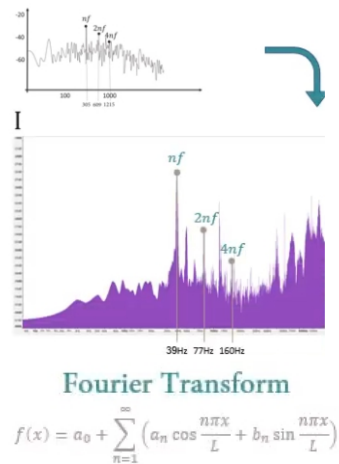


Fig. 5: Fourier series

To understand how Fourier series can define functions, a square function is described by Fourier series here. The higher the value of N, the closer this gets to the desired function.

The sound intensity is one of the main parameters as follows:

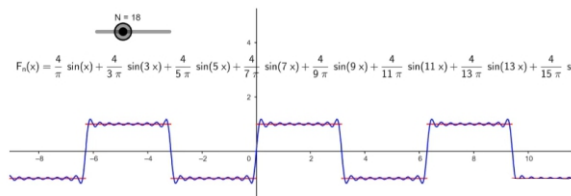


Fig. 6: Experimental Setup

One of the problems that we faced was choosing the airflow for our experiments. First, we thought of blowing, then we thought of using a balloon, and lastly an air compressor. So, we decided to choose between them and we must create a table which include the required features.

As it is observed in the table the compressor would have been a good choice for our experiments but the pressure drop that it has would've had a negative effect on our results so we decided to use the balloon and in order to make sure of the balloon's stability we had to consider pressure difference too (Table 1).

Table 1: The best choice in experimental setup

Option\Ability	Controlling	measurement	Stability
Air Compressor	✓	✓	✓
Balloon	✗	✓	✓
Blowing	✓	✗	✗

By experimenting this 5 times we found that between the time period of 100 to 300 seconds, pressure is approximately constant and so that is the time period we used for the rest of our experiments. Our main airflow that we used for most of experiment was the balloon although on occasion we used the compressor to calculate the effects of pressure .

The related parameters are defined as :

$$I \propto \begin{cases} f = \text{Frequency of sound wave,} \\ \delta = \text{Amplitude of sound wave} \\ \rho = \text{Density of medium in which sound is traveling} \\ c = \text{Speed of sound} \end{cases}$$

The second formula that we have for sound intensity is relevant to "P" which is "change in pressure", density and the speed of observed sound and that originates from the first formula.

$$I = 2\pi^2 f^2 \delta^2 \rho c$$

$$\rho_{air} = \frac{PM}{RT} \begin{cases} \rho: \text{air density } (\frac{kg}{m^3}) \\ P: \text{pressure (Pa)} \\ R: \text{gas constant } \approx 8.3 (\frac{J}{K.m}) \\ M: \text{molar mass of dry air } \approx 0.029 (\frac{kg}{mol}) \\ T: \text{temperature (K)} \end{cases}$$

So by using adobe audition and audacity, we made the siren's frequency bold and reduced the noises.

For better understanding let's compare the frequencies before and after reducing the noise. As shown in the highlighted area other frequencies have been reduced and this chart shows the frequency by time (Fig. 7).

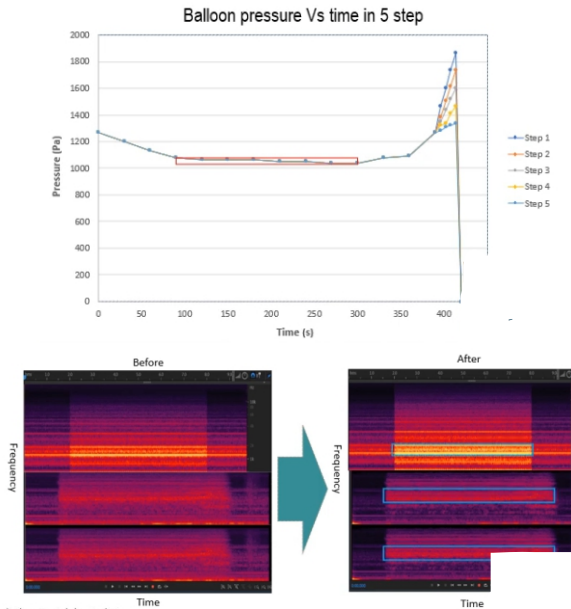


Fig. 7: Frequency in different steps

The first parameter that we experimented was different RPS's which we used 4 different RPS's in our experiments. The sound was the siren's sound with the RPS that is written in front of each frequency (Fig. 8). By dividing the frequency that we hear by RPS, the number that we get is approximately equal to the number of the holes on the disk and by repeating the same experiment with 6 other RPS's and 5 other disks with 5 different hole numbers, we arrive at the same conclusion.

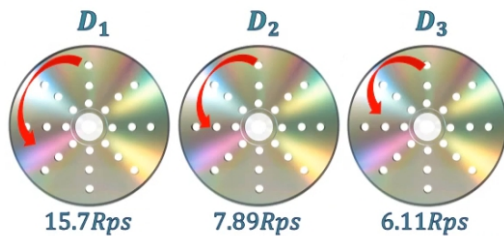











Fig. 8: the RPS of each frequency

So, we can say that the frequency that's produced by the siren is equal to the number of holes that are from the same distance from the center of the disk multiplied by RPS. The rest of the parameters affect the RPS and change the frequency (Table 2) and (Fig. 9).

Table 2: The frequency that's produced by the siren is equal to the number of holes

Disk Num	RPS	Frequency	Voices
D1	15.7	252.496 Hz	Voice 1  
D2	7.9	126.24 Hz	Voice 2  
D3	6.1	97.76 Hz	Voice 3  

Frequency/RPS	Number of Holes	
$\frac{252.496}{15.7}$	16.0825	16 
$\frac{126.24}{7.9}$	15.9797	16 
$\frac{97.76}{6.1}$	16	16 

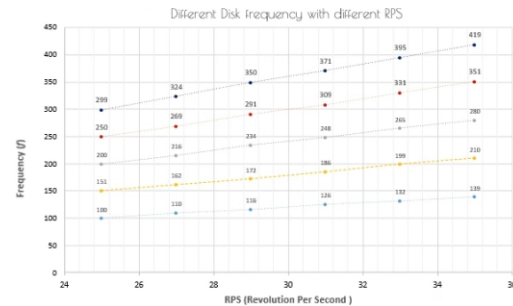


Fig. 9: Different frequencies

"Different pressures" it is the next parameter that was experimented, which due to the Bernoulli they are covered by the experiments with different air flow velocities which we did by using the compressor (Fig. 10).

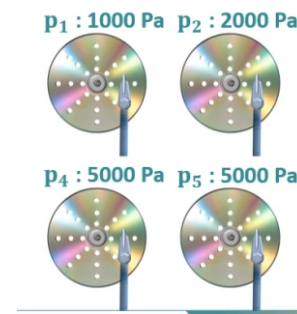


Fig. 10: Experiment in different pressures

As it is observed (Fig. 11) there is a noticeable difference between the numbers extracted from our theory and the numbers that we got from our experiments, this is because of the pressure drop that we mentioned when we chose our airflow and that in all cases I_0 is equal to 10 powered by 7 because our application's I_0 .

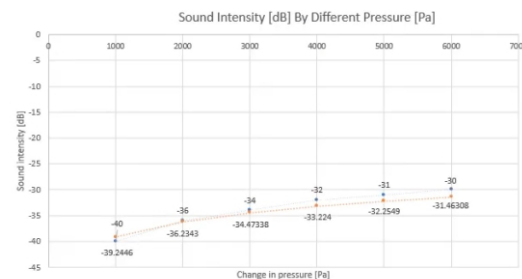


Fig. 11: Sound intensity in different pressures

Due to our experiments the frequency is constant and changes in sound intensity can be calculated with this form

$$f_1 = f_2 = f_3$$

$$I_1 < I_2 < I_3$$

$$\rightarrow I = \frac{(\Delta P)^2}{2\rho v_m}$$

P = change in pressure
 ρ = density of the material the sound is traveling through
 v_m = speed of observed sound

Next parameter is the material of the disk which we experimented with ply wood and a CD. It was observed the frequency and the sound intensity in both is approximately equal because in this case the thickness and all the hole sizes were constant, and within the disk standards, the mass didn't change much and nor did the RPS and frequency, and so we can say that the material of the disk doesn't make much of a difference in the phenomenon in this case (Fig. 12).

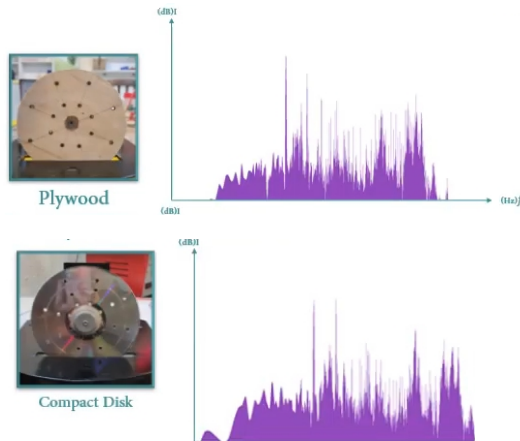


Fig. 12: Comparing two different materials

Next parameter that we investigated was the thickness of the disk. By increasing the thickness of the disk the mass of the disk increases, and from that, the RPS decreases and we expect a thicker disk to have a lower frequency and with a lower frequency according to our theory we have a lower sound intensity and so we can say that with increasing the thickness of the disk both frequency and sound intensity decrease (Fig 13).

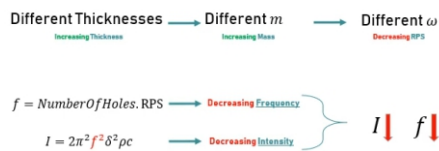


Fig. 13: Different frequencies in different thicknesses

In figure (14) the results of our experiments for 4 thicknesses of 0.2, 0.3, 0.4 and 0.5 centimeters are shown. By putting all the frequencies together, we realize that by increasing the thickness of the disk, its frequency and consequently the sound's intensity decrease.

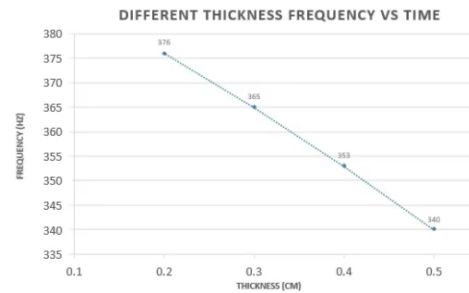
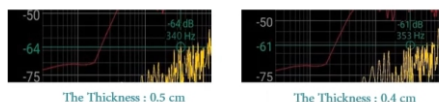


Fig. 14: Frequency VS time in different thicknesses

The next parameter that we investigated is the angle of the drill bit. we did the experiment with a vertical angle and an oblique one. It was found that if we experiment with angles other than oblique and vertical the sound intensity decreases and the frequency stays constant (Fig. 15).

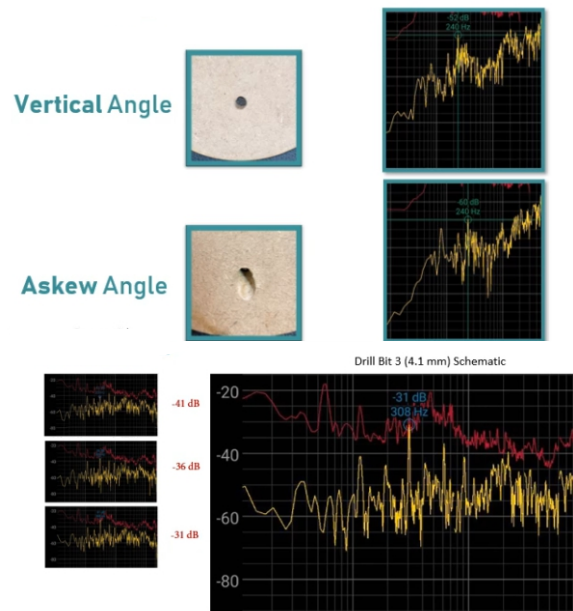


Fig. 15: Different angles

The last parameter that we experimented was different sizes of holes on the disk as it is observed this is the first drill bit which is 1.9mm (Fig. 16).

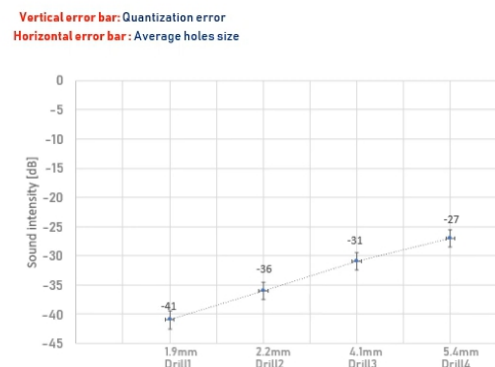


Fig. 16: Different sizes of the holes

The plot for a 2.2 mm drill bit shows only the sound intensity has increased by changing the size of the hole.

By combining the 4-drill bit plots we realize that by increasing the diameter of the holes sound intensity increases but frequency stays constant.

Here we created a melody by directing the airflow to different rows of holes on the disk .

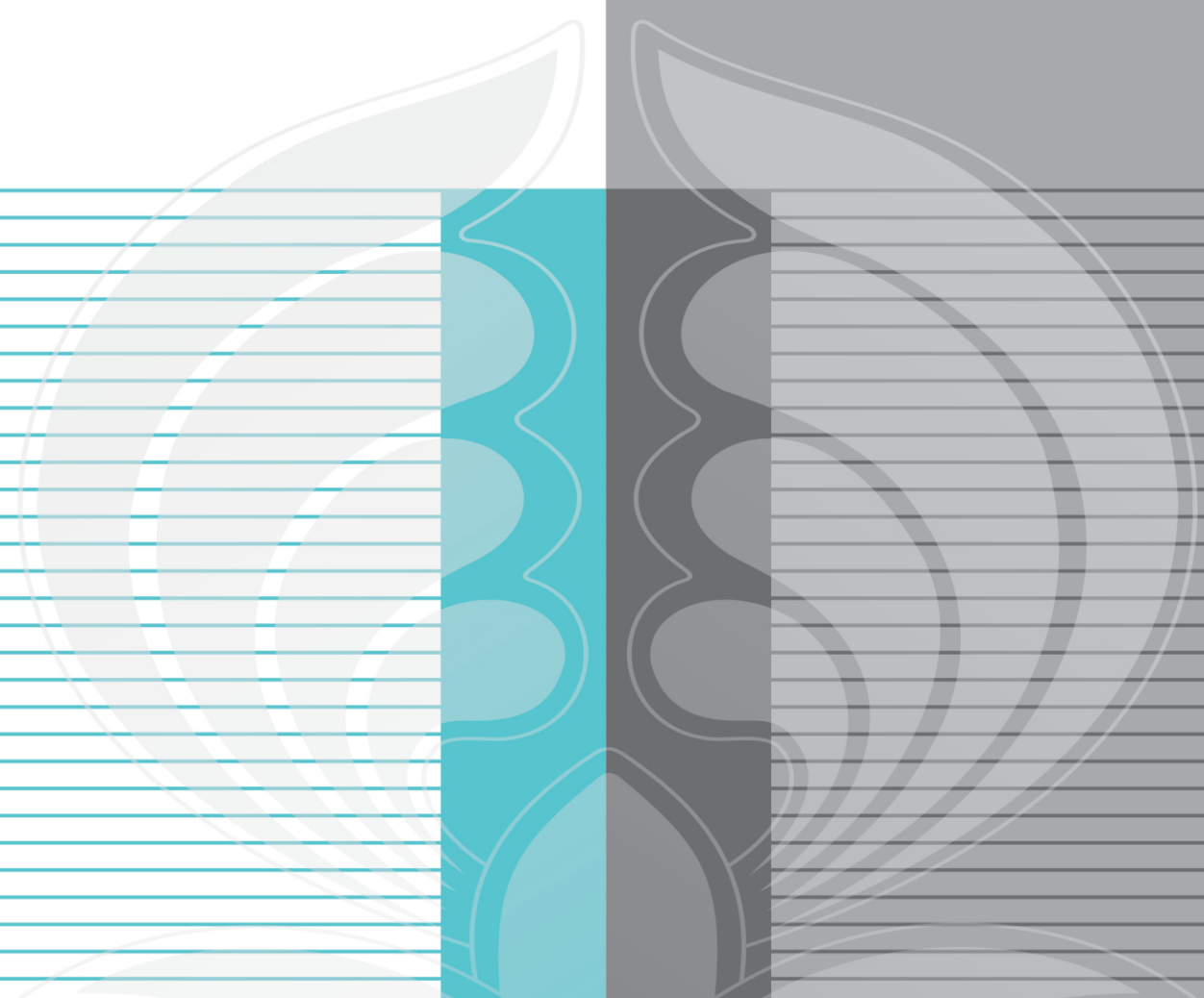
4. Conclusion

This is a summary of all the experiments that we did:

- With the increase of RPS and the number of holes the frequency increases
- The increase of pressure results in the increase of the sound's intensity
- Changes in the material of the disk is negligible
- The increase of the disk's thickness decreases the frequency
- The increase of the hole's diameter increases the sound intensity
- The increase of the number of the holes increases the frequency
- We conclude that the speaker and the siren have similarities and then we investigated the sound characteristics.

References

- <https://www.exploratorium.edu/snacks/siren-disk>
- <https://americanhistory.si.edu/science/sirens>
- <https://pressbooks.pub/sound/chapter/sirens-and-singing-roads/>
- <https://www.sciencebuddies.org/stem-activities/build-disk-siren>
- <https://sciencedemonstrations.fas.harvard.edu/presentations/siren-discs>
- <https://www.britannica.com/science/sound-intensity>
- <https://www.auersignal.com/en/technical-information/audible-signalling-equipment/sound-int>
- <https://www.nps.gov/subjects/sound/understandingsound.htm#:~:text=Frequency%2C%20soned%20to%20as.frequency%2C%20the%20fewer%20the%20oscillations>
- <https://www.attune.com.au/2020/02/12/lets-talk-sound-frequencies/>



Ariaian Young Innovative Minds Institute, AYIMI
Unit 14, No. 32, Malek Ave., Shariati St.
Post Code: 1565843537
Tel - Fax: +9821-77522395, 77507013
Tehran/ Iran
URL: <http://www.ayimi.org>
<http://journal.ayimi.org>
Email: info@ayimi.org